

**HISTORICAL CONTROL DATA OF BODY WEIGHTS,  
FOOD CONSUMPTION AND WATER CONSUMPTION IN  
HsdRccHan<sup>TM</sup>: WIST,  
WISTAR HANNOVER RATS**

**Compiled from Toxicity Studies performed at RCC Ltd. Itingen/Switzerland**

DOMAIN	PARAM	SEX	ANIMAL AGE#	PRO	# ANI	CNT	MEAN UNIT	STD	MIN	MAX	PERC_05	PERC_95
WGT	BODY WEIGHTS	M	5 WEEKS	5	286	286	85.812 g	18.962	58.500	123.700	62.500	118.700
WGT	BODY WEIGHTS	M	6 WEEKS	22	673	685	119.902 g	22.765	77.400	189.250	89.760	161.300
WGT	BODY WEIGHTS	M	7 WEEKS	250	3676	4337	149.296 g	27.806	57.920	262.010	97.720	197.800
WGT	BODY WEIGHTS	M	8 WEEKS	265	3873	5093	195.837 g	26.768	99.100	308.310	149.700	242.190
WGT	BODY WEIGHTS	M	9 WEEKS	272	4009	5211	235.170 g	28.340	125.070	340.620	183.190	280.500
WGT	BODY WEIGHTS	M	10 WEEKS	255	3834	4659	267.589 g	27.217	172.190	368.790	220.210	310.800
WGT	BODY WEIGHTS	M	11 WEEKS	252	3781	5788	298.882 g	27.205	179.080	401.560	253.940	343.350
WGT	BODY WEIGHTS	M	12 WEEKS	203	2720	3114	314.663 g	29.813	223.270	418.480	265.020	363.950
WGT	BODY WEIGHTS	M	13 WEEKS	203	2623	3346	337.790 g	30.839	238.200	448.370	288.280	389.070
WGT	BODY WEIGHTS	M	14 WEEKS	123	2116	2355	355.327 g	33.401	227.100	470.680	301.900	408.930
WGT	BODY WEIGHTS	M	15 WEEKS	104	2018	2256	369.577 g	34.999	256.470	495.320	314.000	427.600
WGT	BODY WEIGHTS	M	16 WEEKS	90	1931	2079	382.339 g	37.645	226.090	516.280	322.100	444.700
WGT	BODY WEIGHTS	M	17 WEEKS	90	1945	2094	394.911 g	38.320	263.500	531.880	333.770	459.470
WGT	BODY WEIGHTS	M	18 WEEKS	86	1906	2129	405.101 g	39.512	268.170	552.890	341.200	470.820
WGT	BODY WEIGHTS	M	19 WEEKS	83	1774	2054	414.526 g	40.742	272.400	560.130	350.470	481.400
WGT	BODY WEIGHTS	M	20 WEEKS	79	1587	2269	424.383 g	41.758	272.760	591.460	359.360	493.740
WGT	BODY WEIGHTS	M	21 WEEKS	64	1174	1204	424.110 g	42.634	276.750	578.090	356.700	494.700
WGT	BODY WEIGHTS	M	22 WEEKS	56	772	880	429.770 g	43.580	278.880	592.410	362.740	503.500
WGT	BODY WEIGHTS	M	23 WEEKS	60	975	1089	438.058 g	45.451	285.420	606.900	369.760	514.700
WGT	BODY WEIGHTS	M	24 WEEKS	49	723	887	447.617 g	45.952	286.670	615.160	374.800	522.020
WGT	BODY WEIGHTS	M	25 WEEKS	27	686	696	452.754 g	46.752	293.720	628.200	382.100	529.200
WGT	BODY WEIGHTS	M	26 WEEKS	17	367	372	455.839 g	45.792	299.810	581.860	384.900	534.600
WGT	BODY WEIGHTS	M	27 WEEKS	23	666	671	465.307 g	46.792	305.490	635.000	396.500	541.740
WGT	BODY WEIGHTS	M	28 WEEKS	20	543	558	464.756 g	46.834	325.680	602.510	392.120	547.000
WGT	BODY WEIGHTS	M	29 WEEKS	19	634	634	476.144 g	46.601	309.500	659.100	408.900	553.900
WGT	BODY WEIGHTS	M	30 WEEKS	12	331	336	481.035 g	45.554	343.260	614.480	413.500	563.130
WGT	BODY WEIGHTS	M	31 WEEKS	17	614	614	485.751 g	47.482	299.800	672.400	416.590	564.400
WGT	BODY WEIGHTS	M	32 WEEKS	16	563	593	488.057 g	48.074	349.480	619.160	415.490	573.770
WGT	BODY WEIGHTS	M	33 WEEKS	15	527	549	496.157 g	50.292	357.340	685.700	422.870	582.100
WGT	BODY WEIGHTS	M	34 WEEKS	10	242	252	499.372 g	48.742	360.640	627.300	422.400	587.410
WGT	BODY WEIGHTS	M	35 WEEKS	16	451	451	505.878 g	51.702	364.680	703.600	433.200	592.400
WGT	BODY WEIGHTS	M	36 WEEKS	12	365	375	504.351 g	51.685	357.660	639.480	426.000	596.650
WGT	BODY WEIGHTS	M	37 WEEKS	13	387	397	513.645 g	51.145	384.100	725.900	442.300	594.100
WGT	BODY WEIGHTS	M	38 WEEKS	7	158	158	523.564 g	48.494	407.000	644.500	447.100	610.600
WGT	BODY WEIGHTS	M	39 WEEKS	12	415	415	526.014 g	53.581	392.100	736.400	448.900	610.700
WGT	BODY WEIGHTS	M	40 WEEKS	9	335	335	523.633 g	54.676	367.330	664.870	436.200	617.220

DOMAIN	PARAM	SEX	ANIMAL AGE#	PRO	# ANI	CNT	MEAN UNIT	STD	MIN	MAX	PERC_05	PERC_95
WGT	BODY WEIGHTS	M	41 WEEKS	11	367	372	530.922 g	54.463	390.200	756.600	456.200	615.800
WGT	BODY WEIGHTS	M	42 WEEKS	5	143	143	545.070 g	49.801	428.500	666.600	471.000	631.800
WGT	BODY WEIGHTS	M	43 WEEKS	9	391	391	542.337 g	56.901	398.460	767.500	459.000	632.700
WGT	BODY WEIGHTS	M	44 WEEKS	6	311	311	538.217 g	57.899	371.570	685.960	449.500	638.600
WGT	BODY WEIGHTS	M	45 WEEKS	8	343	343	547.884 g	57.102	399.800	784.000	468.300	635.400
WGT	BODY WEIGHTS	M	46 WEEKS	3	124	124	560.103 g	53.314	435.000	682.900	483.000	651.700
WGT	BODY WEIGHTS	M	47 WEEKS	9	391	391	555.977 g	59.215	398.900	798.800	470.100	650.500
WGT	BODY WEIGHTS	M	48 WEEKS	6	310	310	554.181 g	60.660	374.560	720.230	462.100	655.000
WGT	BODY WEIGHTS	M	49 WEEKS	8	343	343	561.604 g	59.069	408.800	782.300	479.500	655.400
WGT	BODY WEIGHTS	M	50 WEEKS	3	122	122	573.500 g	55.150	443.100	698.600	491.200	668.800
WGT	BODY WEIGHTS	M	51 WEEKS	9	390	390	570.828 g	60.618	424.100	804.100	483.600	668.700
WGT	BODY WEIGHTS	M	52 WEEKS	6	307	307	564.452 g	63.577	379.570	743.700	470.840	671.000
WGT	BODY WEIGHTS	M	53 WEEKS	8	342	342	574.851 g	62.249	424.600	815.200	489.900	674.380
WGT	BODY WEIGHTS	M	54 WEEKS	3	121	121	583.006 g	58.090	445.900	722.500	485.300	689.900
WGT	BODY WEIGHTS	M	55 WEEKS	9	387	387	581.172 g	64.008	437.900	827.900	488.160	684.260
WGT	BODY WEIGHTS	M	56 WEEKS	7	325	325	576.342 g	64.468	388.650	776.080	480.690	686.600
WGT	BODY WEIGHTS	M	57 WEEKS	7	317	317	587.423 g	64.882	446.010	835.900	498.800	691.700
WGT	BODY WEIGHTS	M	58 WEEKS	4	139	139	598.113 g	60.397	451.900	737.900	502.500	703.900
WGT	BODY WEIGHTS	M	59 WEEKS	8	346	346	590.916 g	66.628	446.000	843.400	496.500	693.380
WGT	BODY WEIGHTS	M	60 WEEKS	6	305	305	590.993 g	68.336	378.020	797.500	489.900	703.900
WGT	BODY WEIGHTS	M	61 WEEKS	6	260	260	601.073 g	67.443	452.160	854.600	506.760	705.200
WGT	BODY WEIGHTS	M	62 WEEKS	3	101	101	615.008 g	65.922	455.600	756.800	510.600	725.500
WGT	BODY WEIGHTS	M	63 WEEKS	7	305	305	607.625 g	69.669	453.200	870.900	511.300	712.900
WGT	BODY WEIGHTS	M	64 WEEKS	5	266	266	603.700 g	75.155	372.040	811.100	487.500	731.700
WGT	BODY WEIGHTS	M	65 WEEKS	5	254	254	612.890 g	70.637	456.160	887.700	510.400	725.110
WGT	BODY WEIGHTS	M	66 WEEKS	2	96	96	628.950 g	68.673	464.800	779.400	522.100	752.000
WGT	BODY WEIGHTS	M	67 WEEKS	6	300	300	619.853 g	73.110	461.330	905.500	511.400	737.770
WGT	BODY WEIGHTS	M	68 WEEKS	5	266	266	615.619 g	78.209	388.980	835.800	496.790	752.190
WGT	BODY WEIGHTS	M	69 WEEKS	5	251	251	626.771 g	73.350	468.950	920.000	525.800	747.700
WGT	BODY WEIGHTS	M	70 WEEKS	2	94	94	639.143 g	70.851	469.270	794.480	536.400	765.700
WGT	BODY WEIGHTS	M	71 WEEKS	6	296	296	631.005 g	74.014	469.900	927.200	522.300	753.600
WGT	BODY WEIGHTS	M	72 WEEKS	5	261	261	625.878 g	81.009	412.240	853.900	493.510	765.370
WGT	BODY WEIGHTS	M	73 WEEKS	5	250	250	636.566 g	76.332	467.100	945.400	526.790	761.600
WGT	BODY WEIGHTS	M	74 WEEKS	2	92	92	649.257 g	72.446	475.100	817.600	542.600	781.500
WGT	BODY WEIGHTS	M	75 WEEKS	6	296	296	640.200 g	77.270	471.100	951.100	526.440	763.520
WGT	BODY WEIGHTS	M	76 WEEKS	5	258	258	630.909 g	82.818	416.740	873.400	490.100	773.310

DOMAIN	PARAM	SEX	ANIMAL AGE#	PRO	# ANI	CNT	MEAN UNIT	STD	MIN	MAX	PERC_05	PERC_95
WGT	BODY WEIGHTS	M	77 WEEKS	5	249	249	644.414 g	79.238	433.500	968.200	532.810	770.200
WGT	BODY WEIGHTS	M	78 WEEKS	2	91	91	654.384 g	74.443	479.800	829.800	550.100	795.300
WGT	BODY WEIGHTS	M	79 WEEKS	6	293	293	649.557 g	78.725	472.400	987.300	536.880	776.000
WGT	BODY WEIGHTS	M	80 WEEKS	5	257	257	639.955 g	87.424	383.710	887.400	496.470	792.200
WGT	BODY WEIGHTS	M	81 WEEKS	5	245	245	652.412 g	78.947	456.200	996.600	546.100	774.400
WGT	BODY WEIGHTS	M	82 WEEKS	2	89	89	661.955 g	75.134	485.900	850.800	560.700	810.200
WGT	BODY WEIGHTS	M	83 WEEKS	6	291	291	657.347 g	81.731	403.900	993.200	542.000	793.220
WGT	BODY WEIGHTS	M	84 WEEKS	5	251	251	645.809 g	92.165	354.680	930.900	498.550	808.900
WGT	BODY WEIGHTS	M	85 WEEKS	5	243	243	658.519 g	82.367	447.500	1012.100	546.100	789.830
WGT	BODY WEIGHTS	M	86 WEEKS	2	86	86	668.514 g	81.329	459.200	876.300	555.300	816.100
WGT	BODY WEIGHTS	M	87 WEEKS	6	288	288	664.827 g	85.411	414.700	1021.300	546.700	802.100
WGT	BODY WEIGHTS	M	88 WEEKS	5	246	246	652.844 g	98.036	260.270	908.700	499.570	813.300
WGT	BODY WEIGHTS	M	89 WEEKS	5	239	239	664.245 g	90.622	326.800	1025.400	539.360	805.400
WGT	BODY WEIGHTS	M	90 WEEKS	2	86	86	669.337 g	86.635	389.200	871.300	540.800	813.600
WGT	BODY WEIGHTS	M	91 WEEKS	6	276	276	671.832 g	86.639	453.500	1022.700	556.500	803.400
WGT	BODY WEIGHTS	M	92 WEEKS	5	242	242	656.682 g	96.697	358.350	902.400	499.680	818.900
WGT	BODY WEIGHTS	M	93 WEEKS	5	231	231	674.639 g	87.993	417.000	1037.800	562.800	813.900
WGT	BODY WEIGHTS	M	94 WEEKS	2	83	83	681.352 g	93.071	340.040	896.500	555.700	829.200
WGT	BODY WEIGHTS	M	95 WEEKS	6	268	268	677.230 g	90.248	461.660	1042.200	553.700	814.000
WGT	BODY WEIGHTS	M	96 WEEKS	5	237	237	663.050 g	95.372	410.960	899.500	510.900	833.000
WGT	BODY WEIGHTS	M	97 WEEKS	5	225	225	676.146 g	88.973	481.610	1036.200	546.710	818.200
WGT	BODY WEIGHTS	M	98 WEEKS	2	79	79	688.498 g	92.114	487.900	903.700	522.300	838.800
WGT	BODY WEIGHTS	M	99 WEEKS	6	260	260	679.315 g	90.149	477.700	1043.100	547.500	829.900
WGT	BODY WEIGHTS	M	100 WEEKS	5	229	229	660.146 g	101.101	390.830	923.700	498.500	832.400
WGT	BODY WEIGHTS	M	101 WEEKS	5	218	218	680.433 g	92.819	451.200	1046.600	541.620	835.700
WGT	BODY WEIGHTS	M	102 WEEKS	2	76	76	679.445 g	96.277	470.800	930.400	538.900	834.000
WGT	BODY WEIGHTS	M	103 WEEKS	6	255	255	681.371 g	97.501	417.300	1048.100	531.300	842.400
WGT	BODY WEIGHTS	M	104 WEEKS	5	217	217	657.011 g	105.054	390.870	928.300	461.970	823.800
WGT	BODY WEIGHTS	M	105 WEEKS	5	210	210	680.784 g	99.235	399.710	1078.700	533.010	843.500
WGT	BODY WEIGHTS	M	106 WEEKS	2	66	66	674.553 g	114.949	366.300	928.400	487.900	847.700
WGT	BODY WEIGHTS	M	107 WEEKS	6	242	242	682.864 g	100.353	375.510	1095.800	534.010	841.600
WGT	BODY WEIGHTS	M	108 WEEKS	5	204	204	659.079 g	108.463	282.400	934.100	487.000	831.200
WGT	BODY WEIGHTS	M	109 WEEKS	5	198	233	683.958 g	98.640	407.800	1105.800	553.200	848.700
WGT	BODY WEIGHTS	M	110 WEEKS	5	172	172	689.770 g	98.068	396.360	915.300	539.400	854.900
WGT	BODY WEIGHTS	M	111 WEEKS	3	127	127	645.590 g	109.184	367.860	988.200	465.590	809.470
WGT	BODY WEIGHTS	M	112 WEEKS	1	40	40	666.082 g	110.302	402.530	904.590	512.430	846.650

DOMAIN	PARAM	SEX	ANIMAL AGE#	PRO	# ANI	CNT	MEAN UNIT	STD	MIN	MAX	PERC_05	PERC_95
WGT	BODY WEIGHTS	F	5 WEEKS	5	286	286	77.348 g	15.522	51.160	108.520	56.630	101.710
WGT	BODY WEIGHTS	F	6 WEEKS	22	673	685	101.321 g	16.765	65.900	156.850	76.200	130.100
WGT	BODY WEIGHTS	F	7 WEEKS	246	3637	4276	122.765 g	19.081	48.030	212.680	85.070	150.360
WGT	BODY WEIGHTS	F	8 WEEKS	250	3672	4785	146.811 g	16.214	82.150	216.030	118.920	173.070
WGT	BODY WEIGHTS	F	9 WEEKS	246	3658	4740	166.604 g	15.634	108.900	240.700	140.670	192.000
WGT	BODY WEIGHTS	F	10 WEEKS	240	3619	4431	181.834 g	15.335	125.100	242.100	156.950	207.320
WGT	BODY WEIGHTS	F	11 WEEKS	254	3791	5803	195.075 g	17.109	109.000	261.840	170.280	221.370
WGT	BODY WEIGHTS	F	12 WEEKS	205	2745	3151	202.154 g	18.626	127.420	330.140	172.530	231.660
WGT	BODY WEIGHTS	F	13 WEEKS	207	2686	3344	213.690 g	18.021	140.930	288.540	185.460	241.770
WGT	BODY WEIGHTS	F	14 WEEKS	124	2248	2507	221.284 g	18.614	150.340	293.690	191.300	251.070
WGT	BODY WEIGHTS	F	15 WEEKS	107	2133	2459	226.537 g	18.726	159.950	303.460	196.360	256.660
WGT	BODY WEIGHTS	F	16 WEEKS	98	1996	2143	232.181 g	18.882	135.560	308.430	202.050	262.310
WGT	BODY WEIGHTS	F	17 WEEKS	97	1986	2164	236.712 g	19.516	146.380	317.810	206.070	268.260
WGT	BODY WEIGHTS	F	18 WEEKS	89	1940	2177	240.836 g	18.203	178.790	319.410	212.540	272.620
WGT	BODY WEIGHTS	F	19 WEEKS	86	1800	2079	243.742 g	18.874	177.850	319.000	213.860	276.730
WGT	BODY WEIGHTS	F	20 WEEKS	80	1592	2277	248.222 g	19.195	185.040	330.890	217.030	282.360
WGT	BODY WEIGHTS	F	21 WEEKS	65	1208	1238	247.698 g	19.358	190.750	323.800	217.430	282.090
WGT	BODY WEIGHTS	F	22 WEEKS	57	787	871	249.591 g	18.971	188.560	327.390	219.600	282.630
WGT	BODY WEIGHTS	F	23 WEEKS	60	1006	1081	251.993 g	19.690	187.970	340.840	220.980	286.300
WGT	BODY WEIGHTS	F	24 WEEKS	49	784	974	257.037 g	20.374	166.600	350.660	225.210	291.840
WGT	BODY WEIGHTS	F	25 WEEKS	27	726	776	257.182 g	20.258	172.320	350.320	226.770	290.050
WGT	BODY WEIGHTS	F	26 WEEKS	17	372	377	259.103 g	20.032	157.540	316.600	228.200	293.620
WGT	BODY WEIGHTS	F	27 WEEKS	23	671	676	261.949 g	20.363	131.380	326.240	230.100	295.400
WGT	BODY WEIGHTS	F	28 WEEKS	20	558	573	263.226 g	20.997	198.430	333.100	229.400	296.940
WGT	BODY WEIGHTS	F	29 WEEKS	21	659	659	264.909 g	20.465	207.050	335.900	232.720	297.800
WGT	BODY WEIGHTS	F	30 WEEKS	15	355	360	266.849 g	21.388	205.060	346.100	233.150	303.900
WGT	BODY WEIGHTS	F	31 WEEKS	18	622	622	268.595 g	21.772	209.170	342.400	233.200	304.470
WGT	BODY WEIGHTS	F	32 WEEKS	16	566	596	270.748 g	22.980	201.800	343.050	233.900	306.600
WGT	BODY WEIGHTS	F	33 WEEKS	15	543	565	270.623 g	22.138	213.300	346.200	236.890	306.200
WGT	BODY WEIGHTS	F	34 WEEKS	10	243	253	271.854 g	23.055	220.900	340.250	234.340	311.300
WGT	BODY WEIGHTS	F	35 WEEKS	16	455	455	274.418 g	23.398	216.600	354.710	240.110	312.400
WGT	BODY WEIGHTS	F	36 WEEKS	13	372	372	276.665 g	24.805	206.470	353.290	239.960	318.960
WGT	BODY WEIGHTS	F	37 WEEKS	15	406	416	276.970 g	24.476	222.400	370.480	243.030	319.780
WGT	BODY WEIGHTS	F	38 WEEKS	9	175	185	281.301 g	25.731	219.650	386.350	244.000	323.180
WGT	BODY WEIGHTS	F	39 WEEKS	12	419	419	282.130 g	24.897	225.010	374.660	245.500	321.900
WGT	BODY WEIGHTS	F	40 WEEKS	9	337	337	283.040 g	24.934	211.350	362.500	243.600	324.720

DOMAIN	PARAM	SEX	ANIMAL	AGE#	PRO	# ANI	CNT	MEAN	UNIT	STD	MIN	MAX	PERC_05	PERC_95
WGT	BODY WEIGHTS	F	41	WEEKS	11	371	376	284.101	g	26.703	224.200	433.900	243.300	328.300
WGT	BODY WEIGHTS	F	42	WEEKS	5	145	145	287.468	g	24.870	238.500	357.800	251.500	327.300
WGT	BODY WEIGHTS	F	43	WEEKS	9	394	394	288.239	g	27.641	222.300	419.700	247.000	331.160
WGT	BODY WEIGHTS	F	44	WEEKS	6	312	312	288.320	g	28.262	210.020	393.130	246.140	336.300
WGT	BODY WEIGHTS	F	45	WEEKS	8	346	346	291.463	g	27.125	224.500	374.400	248.960	337.500
WGT	BODY WEIGHTS	F	46	WEEKS	3	125	125	295.656	g	29.116	240.500	384.400	250.640	342.300
WGT	BODY WEIGHTS	F	47	WEEKS	9	394	394	294.256	g	29.323	226.210	414.010	250.300	343.800
WGT	BODY WEIGHTS	F	48	WEEKS	6	312	312	296.056	g	31.351	211.570	424.590	248.420	350.850
WGT	BODY WEIGHTS	F	49	WEEKS	8	346	346	296.759	g	29.452	222.300	392.800	255.300	348.740
WGT	BODY WEIGHTS	F	50	WEEKS	3	125	125	301.333	g	30.752	239.330	396.050	256.800	352.200
WGT	BODY WEIGHTS	F	51	WEEKS	9	394	394	300.982	g	32.137	227.340	427.460	253.240	359.800
WGT	BODY WEIGHTS	F	52	WEEKS	6	311	311	299.783	g	32.536	212.850	406.100	251.910	358.100
WGT	BODY WEIGHTS	F	53	WEEKS	8	346	346	304.744	g	33.400	226.870	402.390	256.080	363.200
WGT	BODY WEIGHTS	F	54	WEEKS	3	125	125	308.826	g	34.001	242.700	410.200	264.000	360.600
WGT	BODY WEIGHTS	F	55	WEEKS	9	394	394	308.662	g	34.692	235.420	446.010	258.610	369.780
WGT	BODY WEIGHTS	F	56	WEEKS	7	331	331	306.457	g	36.140	211.240	424.050	254.310	369.890
WGT	BODY WEIGHTS	F	57	WEEKS	7	326	326	312.711	g	35.614	228.850	428.500	260.930	371.900
WGT	BODY WEIGHTS	F	58	WEEKS	4	145	145	319.378	g	36.775	244.800	423.700	268.600	375.500
WGT	BODY WEIGHTS	F	59	WEEKS	8	353	353	312.793	g	37.723	229.300	453.100	261.020	382.550
WGT	BODY WEIGHTS	F	60	WEEKS	6	311	311	315.061	g	38.419	217.740	430.890	261.020	382.850
WGT	BODY WEIGHTS	F	61	WEEKS	6	265	265	320.518	g	38.478	234.910	443.100	266.400	382.100
WGT	BODY WEIGHTS	F	62	WEEKS	3	105	105	325.139	g	39.099	251.300	432.100	275.000	380.100
WGT	BODY WEIGHTS	F	63	WEEKS	7	313	313	322.315	g	40.952	230.920	461.200	264.400	390.720
WGT	BODY WEIGHTS	F	64	WEEKS	6	276	276	323.011	g	41.994	215.220	450.300	265.960	401.300
WGT	BODY WEIGHTS	F	65	WEEKS	6	265	265	328.217	g	41.805	236.020	463.210	269.960	398.820
WGT	BODY WEIGHTS	F	66	WEEKS	2	99	99	336.666	g	43.535	245.100	460.800	276.700	402.000
WGT	BODY WEIGHTS	F	67	WEEKS	6	307	307	331.682	g	44.617	232.660	474.600	264.090	403.600
WGT	BODY WEIGHTS	F	68	WEEKS	5	271	271	330.715	g	46.985	215.970	462.020	263.790	411.500
WGT	BODY WEIGHTS	F	69	WEEKS	5	258	258	336.742	g	45.997	231.590	505.600	272.300	417.740
WGT	BODY WEIGHTS	F	70	WEEKS	2	99	99	344.103	g	46.037	245.510	471.140	282.200	414.200
WGT	BODY WEIGHTS	F	71	WEEKS	6	304	304	339.101	g	47.333	235.950	523.400	270.850	419.700
WGT	BODY WEIGHTS	F	72	WEEKS	5	269	269	337.743	g	49.460	217.280	474.300	271.200	424.180
WGT	BODY WEIGHTS	F	73	WEEKS	5	257	257	345.474	g	48.980	243.320	557.870	274.410	430.890
WGT	BODY WEIGHTS	F	74	WEEKS	2	97	97	351.691	g	49.076	251.800	472.300	283.540	436.250
WGT	BODY WEIGHTS	F	75	WEEKS	6	303	303	348.110	g	50.517	234.960	563.300	278.710	437.500
WGT	BODY WEIGHTS	F	76	WEEKS	5	263	263	343.484	g	50.140	217.910	477.900	273.660	428.700

DOMAIN	PARAM	SEX	ANIMAL AGE#	PRO	# ANI	CNT	MEAN UNIT	STD	MIN	MAX	PERC_05	PERC_95
WGT	BODY WEIGHTS	F	77 WEEKS	5	255	255	353.784 g	51.714	238.900	576.900	279.400	443.900
WGT	BODY WEIGHTS	F	78 WEEKS	2	96	96	356.182 g	51.086	246.200	475.540	285.100	440.060
WGT	BODY WEIGHTS	F	79 WEEKS	6	298	298	354.874 g	52.168	179.440	533.400	275.030	451.200
WGT	BODY WEIGHTS	F	80 WEEKS	5	261	261	352.853 g	53.071	226.690	485.220	275.670	449.300
WGT	BODY WEIGHTS	F	81 WEEKS	5	250	250	358.816 g	50.901	257.170	545.300	279.620	456.100
WGT	BODY WEIGHTS	F	82 WEEKS	2	94	94	364.910 g	52.369	244.020	485.850	292.490	451.640
WGT	BODY WEIGHTS	F	83 WEEKS	6	294	294	362.680 g	52.885	234.020	546.500	280.040	463.300
WGT	BODY WEIGHTS	F	84 WEEKS	5	254	254	357.618 g	54.626	226.420	501.720	274.100	452.400
WGT	BODY WEIGHTS	F	85 WEEKS	5	247	247	369.539 g	51.045	262.390	551.500	293.260	463.470
WGT	BODY WEIGHTS	F	86 WEEKS	2	92	92	373.090 g	53.765	250.200	508.400	290.200	455.700
WGT	BODY WEIGHTS	F	87 WEEKS	6	289	289	371.231 g	52.880	259.690	568.060	291.100	470.060
WGT	BODY WEIGHTS	F	88 WEEKS	5	251	251	368.141 g	57.333	229.320	525.700	283.920	464.190
WGT	BODY WEIGHTS	F	89 WEEKS	5	244	244	372.965 g	53.461	217.790	569.200	290.400	459.990
WGT	BODY WEIGHTS	F	90 WEEKS	2	91	91	379.422 g	57.299	252.030	518.760	295.800	464.030
WGT	BODY WEIGHTS	F	91 WEEKS	6	281	281	375.357 g	53.633	244.170	567.140	292.890	472.070
WGT	BODY WEIGHTS	F	92 WEEKS	5	250	250	371.845 g	62.274	227.960	535.350	277.810	471.900
WGT	BODY WEIGHTS	F	93 WEEKS	5	233	233	378.135 g	53.657	237.340	583.800	299.360	465.300
WGT	BODY WEIGHTS	F	94 WEEKS	2	86	86	390.130 g	60.497	249.990	546.000	297.600	475.500
WGT	BODY WEIGHTS	F	95 WEEKS	6	270	270	380.702 g	54.398	253.880	583.900	300.660	467.200
WGT	BODY WEIGHTS	F	96 WEEKS	5	240	240	378.228 g	64.210	200.650	541.330	283.610	480.540
WGT	BODY WEIGHTS	F	97 WEEKS	5	223	223	383.208 g	54.271	261.690	593.210	307.500	462.930
WGT	BODY WEIGHTS	F	98 WEEKS	2	83	83	393.158 g	61.035	252.720	544.400	300.610	481.390
WGT	BODY WEIGHTS	F	99 WEEKS	6	259	259	381.229 g	57.161	246.650	578.000	289.800	476.300
WGT	BODY WEIGHTS	F	100 WEEKS	5	229	229	383.591 g	65.112	235.100	554.600	277.760	490.700
WGT	BODY WEIGHTS	F	101 WEEKS	5	212	212	389.068 g	55.852	214.670	597.000	310.470	481.300
WGT	BODY WEIGHTS	F	102 WEEKS	2	80	80	400.509 g	62.005	261.740	570.230	294.950	496.400
WGT	BODY WEIGHTS	F	103 WEEKS	6	248	248	388.119 g	57.977	265.650	603.200	300.910	483.800
WGT	BODY WEIGHTS	F	104 WEEKS	5	219	219	390.259 g	66.439	235.700	572.990	283.650	489.700
WGT	BODY WEIGHTS	F	105 WEEKS	5	205	205	390.847 g	58.615	229.010	613.200	316.080	481.400
WGT	BODY WEIGHTS	F	106 WEEKS	2	77	77	401.673 g	60.265	260.360	566.760	297.100	486.500
WGT	BODY WEIGHTS	F	107 WEEKS	6	239	239	388.060 g	58.133	251.310	616.100	305.540	484.330
WGT	BODY WEIGHTS	F	108 WEEKS	5	207	207	389.360 g	68.059	207.550	609.730	281.860	487.300
WGT	BODY WEIGHTS	F	109 WEEKS	5	196	231	394.409 g	60.172	260.640	641.790	312.290	497.600
WGT	BODY WEIGHTS	F	110 WEEKS	5	194	194	391.515 g	61.375	214.130	600.700	295.560	483.800
WGT	BODY WEIGHTS	F	111 WEEKS	3	126	126	380.453 g	63.307	188.450	515.600	285.510	478.020
WGT	BODY WEIGHTS	F	112 WEEKS	1	33	33	415.376 g	81.804	230.510	630.430	314.290	518.460

DOMAIN	PARAM	SEX	ANIMAL AGE#	PRO	# ANI	CNT	MEAN UNIT	STD	MIN	MAX	PERC_05	PERC_95
WGT	FOOD_CONS.	M	6 WEEKS	6	305	305	14.937 g/Ani/D	2.015	12.177	18.769	12.560	18.333
WGT	FOOD_CONS.	M	7 WEEKS	38	799	992	17.402 g/Ani/D	1.989	7.167	32.320	14.800	20.140
WGT	FOOD_CONS.	M	8 WEEKS	179	2333	2729	18.750 g/Ani/D	2.057	13.415	35.286	16.043	22.329
WGT	FOOD_CONS.	M	9 WEEKS	190	2494	2868	20.816 g/Ani/D	1.876	11.310	32.500	18.340	24.143
WGT	FOOD_CONS.	M	10 WEEKS	188	2495	2684	21.944 g/Ani/D	2.193	10.793	43.600	19.077	25.047
WGT	FOOD_CONS.	M	11 WEEKS	188	2490	3649	22.442 g/Ani/D	2.337	0.000	30.450	18.867	25.507
WGT	FOOD_CONS.	M	12 WEEKS	73	1466	1626	22.884 g/Ani/D	2.107	13.500	33.893	19.751	26.568
WGT	FOOD_CONS.	M	13 WEEKS	141	1766	2243	23.067 g/Ani/D	1.980	9.867	37.814	20.160	26.123
WGT	FOOD_CONS.	M	14 WEEKS	72	1369	1499	22.702 g/Ani/D	2.015	12.385	31.465	20.080	25.919
WGT	FOOD_CONS.	M	15 WEEKS	64	1312	1427	22.270 g/Ani/D	1.909	12.975	33.360	19.414	25.370
WGT	FOOD_CONS.	M	16 WEEKS	60	1294	1414	22.034 g/Ani/D	1.956	13.230	30.765	19.273	25.299
WGT	FOOD_CONS.	M	17 WEEKS	60	1314	1424	21.919 g/Ani/D	1.867	13.960	27.680	18.943	25.000
WGT	FOOD_CONS.	M	18 WEEKS	58	1288	1553	21.904 g/Ani/D	1.867	14.935	29.820	19.120	24.925
WGT	FOOD_CONS.	M	19 WEEKS	55	1136	1363	21.765 g/Ani/D	2.260	0.743	30.420	18.959	24.888
WGT	FOOD_CONS.	M	20 WEEKS	50	1119	1493	21.898 g/Ani/D	1.821	14.040	30.170	19.210	24.899
WGT	FOOD_CONS.	M	21 WEEKS	31	706	721	21.959 g/Ani/D	2.427	18.355	43.100	19.406	24.600
WGT	FOOD_CONS.	M	22 WEEKS	36	572	622	21.567 g/Ani/D	1.698	17.773	28.030	19.220	24.345
WGT	FOOD_CONS.	M	23 WEEKS	36	562	661	22.025 g/Ani/D	1.640	15.242	30.670	19.413	24.493
WGT	FOOD_CONS.	M	24 WEEKS	28	462	566	21.711 g/Ani/D	1.815	17.523	27.714	19.403	25.686
WGT	FOOD_CONS.	M	25 WEEKS	16	463	463	21.879 g/Ani/D	1.460	17.002	26.100	20.010	24.616
WGT	FOOD_CONS.	M	26 WEEKS	12	313	313	21.427 g/Ani/D	1.797	17.100	27.338	18.677	24.283
WGT	FOOD_CONS.	M	27 WEEKS	13	338	338	21.445 g/Ani/D	1.414	15.050	25.000	19.549	24.125
WGT	FOOD_CONS.	M	28 WEEKS	12	303	308	21.114 g/Ani/D	1.592	16.357	25.852	18.753	23.451
WGT	FOOD_CONS.	M	29 WEEKS	12	438	438	21.402 g/Ani/D	1.955	13.774	26.523	19.051	24.625
WGT	FOOD_CONS.	M	30 WEEKS	8	282	282	21.626 g/Ani/D	2.854	18.246	33.789	19.020	26.705
WGT	FOOD_CONS.	M	31 WEEKS	9	308	308	21.208 g/Ani/D	1.652	16.487	26.802	19.014	23.981
WGT	FOOD_CONS.	M	32 WEEKS	10	317	317	20.666 g/Ani/D	2.922	6.081	26.778	18.151	23.406
WGT	FOOD_CONS.	M	33 WEEKS	9	378	378	21.778 g/Ani/D	1.856	13.056	26.524	18.960	24.567
WGT	FOOD_CONS.	M	34 WEEKS	7	237	237	20.754 g/Ani/D	1.342	18.049	23.151	18.674	23.040
WGT	FOOD_CONS.	M	35 WEEKS	9	270	270	21.966 g/Ani/D	1.420	17.660	26.190	20.446	25.076
WGT	FOOD_CONS.	M	36 WEEKS	7	242	252	20.938 g/Ani/D	1.315	17.556	24.790	18.937	22.738
WGT	FOOD_CONS.	M	37 WEEKS	9	380	390	21.823 g/Ani/D	1.443	19.201	26.598	19.926	23.976
WGT	FOOD_CONS.	M	38 WEEKS	5	222	222	21.039 g/Ani/D	1.198	19.020	23.846	19.423	23.071
WGT	FOOD_CONS.	M	39 WEEKS	6	245	245	21.291 g/Ani/D	1.499	18.929	25.690	19.420	25.095
WGT	FOOD_CONS.	M	40 WEEKS	5	222	222	21.005 g/Ani/D	1.078	18.700	23.017	19.271	22.713
WGT	FOOD_CONS.	M	41 WEEKS	8	370	370	21.940 g/Ani/D	1.270	19.411	24.662	20.337	24.252



DOMAIN	PARAM	SEX	ANIMAL AGE#	PRO	# ANI	CNT	MEAN UNIT	STD	MIN	MAX	PERC_05	PERC_95
WGT	FOOD_CONS.	M	42 WEEKS	5	222	222	21.074 g/Ani/D	1.477	15.971	24.166	19.417	23.374
WGT	FOOD_CONS.	M	43 WEEKS	6	245	245	22.030 g/Ani/D	1.313	19.574	25.571	20.054	24.579
WGT	FOOD_CONS.	M	44 WEEKS	5	222	222	21.360 g/Ani/D	1.087	19.506	23.614	19.726	23.020
WGT	FOOD_CONS.	M	45 WEEKS	8	370	370	22.183 g/Ani/D	1.512	19.486	25.851	19.963	24.799
WGT	FOOD_CONS.	M	46 WEEKS	5	222	222	21.345 g/Ani/D	1.347	19.231	24.109	19.363	23.300
WGT	FOOD_CONS.	M	47 WEEKS	6	245	245	22.286 g/Ani/D	2.406	19.546	35.203	19.817	25.990
WGT	FOOD_CONS.	M	48 WEEKS	5	222	222	21.351 g/Ani/D	1.345	17.969	23.571	19.000	23.329
WGT	FOOD_CONS.	M	49 WEEKS	8	369	369	21.966 g/Ani/D	1.922	19.034	27.077	19.731	25.937
WGT	FOOD_CONS.	M	50 WEEKS	5	220	220	21.009 g/Ani/D	1.111	19.234	23.880	19.394	22.763
WGT	FOOD_CONS.	M	51 WEEKS	6	244	244	21.545 g/Ani/D	1.550	17.406	25.357	19.214	24.329
WGT	FOOD_CONS.	M	52 WEEKS	5	219	219	20.673 g/Ani/D	1.322	18.363	26.614	18.993	22.651
WGT	FOOD_CONS.	M	53 WEEKS	8	367	367	22.052 g/Ani/D	1.717	15.895	26.310	19.862	25.007
WGT	FOOD_CONS.	M	54 WEEKS	5	219	219	20.457 g/Ani/D	0.998	18.049	22.457	18.637	22.154
WGT	FOOD_CONS.	M	55 WEEKS	6	242	242	21.916 g/Ani/D	1.589	18.395	26.850	20.083	25.057
WGT	FOOD_CONS.	M	56 WEEKS	6	237	237	21.142 g/Ani/D	1.191	18.154	23.700	19.651	23.340
WGT	FOOD_CONS.	M	57 WEEKS	7	345	345	21.944 g/Ani/D	1.842	16.449	25.886	19.299	24.751
WGT	FOOD_CONS.	M	58 WEEKS	6	236	236	20.177 g/Ani/D	2.144	11.297	25.587	17.700	23.464
WGT	FOOD_CONS.	M	59 WEEKS	5	203	203	21.855 g/Ani/D	1.519	18.833	26.956	19.844	24.480
WGT	FOOD_CONS.	M	60 WEEKS	6	275	275	21.661 g/Ani/D	2.084	18.974	38.852	20.043	23.349
WGT	FOOD_CONS.	M	61 WEEKS	5	228	228	23.020 g/Ani/D	1.833	19.283	27.371	20.500	25.890
WGT	FOOD_CONS.	M	62 WEEKS	5	198	198	20.928 g/Ani/D	1.368	18.017	22.849	18.366	22.646
WGT	FOOD_CONS.	M	63 WEEKS	4	163	163	22.493 g/Ani/D	1.796	16.531	26.724	20.689	25.333
WGT	FOOD_CONS.	M	64 WEEKS	4	193	193	21.131 g/Ani/D	0.980	18.814	23.433	19.294	22.569
WGT	FOOD_CONS.	M	65 WEEKS	5	265	265	22.680 g/Ani/D	1.830	19.576	26.497	20.305	25.987
WGT	FOOD_CONS.	M	66 WEEKS	4	193	193	20.874 g/Ani/D	1.150	17.489	23.533	19.620	22.357
WGT	FOOD_CONS.	M	67 WEEKS	3	157	157	21.707 g/Ani/D	1.900	16.994	25.766	19.182	25.353
WGT	FOOD_CONS.	M	68 WEEKS	4	193	193	21.136 g/Ani/D	1.266	16.289	24.100	19.897	22.997
WGT	FOOD_CONS.	M	69 WEEKS	5	263	263	22.787 g/Ani/D	1.600	19.471	26.352	20.100	25.529
WGT	FOOD_CONS.	M	70 WEEKS	4	190	190	21.642 g/Ani/D	2.012	17.560	29.648	19.404	23.557
WGT	FOOD_CONS.	M	71 WEEKS	3	155	155	22.506 g/Ani/D	1.453	20.062	25.743	20.629	25.005
WGT	FOOD_CONS.	M	72 WEEKS	4	188	188	20.766 g/Ani/D	1.220	17.743	24.329	19.351	22.786
WGT	FOOD_CONS.	M	73 WEEKS	5	261	261	22.129 g/Ani/D	1.806	19.049	26.549	19.381	24.921
WGT	FOOD_CONS.	M	74 WEEKS	4	187	187	21.343 g/Ani/D	1.273	18.446	24.537	19.909	23.466
WGT	FOOD_CONS.	M	75 WEEKS	3	155	155	20.711 g/Ani/D	1.832	18.094	24.923	18.257	24.559
WGT	FOOD_CONS.	M	76 WEEKS	4	186	186	21.216 g/Ani/D	1.108	19.183	24.319	19.436	23.069
WGT	FOOD_CONS.	M	77 WEEKS	5	259	259	23.012 g/Ani/D	1.746	19.206	27.162	20.795	26.063

DOMAIN	PARAM	SEX	ANIMAL AGE#	PRO	# ANI	CNT	MEAN UNIT	STD	MIN	MAX	PERC_05	PERC_95
WGT	FOOD_CONS.	M	78 WEEKS	4	186	186	21.333 g/Ani/D	1.124	18.974	24.326	19.840	23.063
WGT	FOOD_CONS.	M	79 WEEKS	3	153	153	21.708 g/Ani/D	1.644	16.919	25.062	19.321	24.376
WGT	FOOD_CONS.	M	80 WEEKS	4	184	184	21.094 g/Ani/D	1.419	16.468	24.310	19.662	23.623
WGT	FOOD_CONS.	M	81 WEEKS	5	257	257	22.293 g/Ani/D	2.042	17.435	26.683	18.890	25.683
WGT	FOOD_CONS.	M	82 WEEKS	4	182	182	21.146 g/Ani/D	1.325	17.163	23.552	19.566	23.263
WGT	FOOD_CONS.	M	83 WEEKS	3	152	152	21.793 g/Ani/D	1.896	15.471	25.000	19.031	24.280
WGT	FOOD_CONS.	M	84 WEEKS	4	181	181	21.185 g/Ani/D	1.811	15.929	24.895	18.514	23.919
WGT	FOOD_CONS.	M	85 WEEKS	5	254	254	21.963 g/Ani/D	2.131	16.548	26.259	18.379	25.234
WGT	FOOD_CONS.	M	86 WEEKS	4	179	179	20.934 g/Ani/D	1.512	16.834	23.994	19.163	23.549
WGT	FOOD_CONS.	M	87 WEEKS	3	149	149	22.418 g/Ani/D	2.259	16.071	26.814	18.969	26.010
WGT	FOOD_CONS.	M	88 WEEKS	4	179	179	21.372 g/Ani/D	1.821	16.891	24.537	18.594	23.849
WGT	FOOD_CONS.	M	89 WEEKS	5	250	250	21.988 g/Ani/D	2.296	13.307	26.189	18.414	25.181
WGT	FOOD_CONS.	M	90 WEEKS	4	174	174	20.808 g/Ani/D	1.649	15.964	23.929	17.939	23.703
WGT	FOOD_CONS.	M	91 WEEKS	3	146	146	22.232 g/Ani/D	2.102	13.814	26.643	18.757	24.733
WGT	FOOD_CONS.	M	92 WEEKS	4	171	171	20.921 g/Ani/D	1.434	16.815	24.211	19.377	23.923
WGT	FOOD_CONS.	M	93 WEEKS	5	245	245	22.167 g/Ani/D	2.075	15.657	26.943	18.714	24.963
WGT	FOOD_CONS.	M	94 WEEKS	4	169	169	20.550 g/Ani/D	1.460	18.210	23.711	18.597	22.951
WGT	FOOD_CONS.	M	95 WEEKS	3	142	142	22.464 g/Ani/D	2.609	13.838	27.689	19.586	25.907
WGT	FOOD_CONS.	M	96 WEEKS	4	168	168	21.440 g/Ani/D	1.576	18.043	25.636	19.600	23.498
WGT	FOOD_CONS.	M	97 WEEKS	5	237	237	22.432 g/Ani/D	2.064	17.211	28.074	19.286	25.600
WGT	FOOD_CONS.	M	98 WEEKS	4	165	165	20.800 g/Ani/D	1.891	13.818	24.357	18.881	23.677
WGT	FOOD_CONS.	M	99 WEEKS	3	135	135	22.959 g/Ani/D	2.112	18.893	27.640	20.018	26.521
WGT	FOOD_CONS.	M	100 WEEKS	4	162	162	20.346 g/Ani/D	1.888	15.351	23.819	17.626	23.175
WGT	FOOD_CONS.	M	101 WEEKS	5	230	230	22.320 g/Ani/D	2.167	18.282	27.597	18.871	26.514
WGT	FOOD_CONS.	M	102 WEEKS	4	160	160	20.249 g/Ani/D	2.360	11.323	23.854	17.129	23.214
WGT	FOOD_CONS.	M	103 WEEKS	3	134	134	22.279 g/Ani/D	2.486	15.154	27.257	19.157	26.457
WGT	FOOD_CONS.	M	104 WEEKS	4	153	153	19.894 g/Ani/D	2.360	10.093	22.980	16.275	22.747
WGT	FOOD_CONS.	M	105 WEEKS	5	223	223	22.023 g/Ani/D	2.601	15.683	28.432	17.368	25.971
WGT	FOOD_CONS.	M	106 WEEKS	4	146	146	20.544 g/Ani/D	2.747	7.886	23.995	16.429	23.129
WGT	FOOD_CONS.	M	107 WEEKS	3	126	126	21.253 g/Ani/D	2.419	15.010	25.932	17.966	24.962
WGT	FOOD_CONS.	M	108 WEEKS	4	141	141	20.384 g/Ani/D	2.632	0.357	23.233	16.636	23.024
WGT	FOOD_CONS.	M	109 WEEKS	6	243	243	21.849 g/Ani/D	2.042	12.929	29.014	19.288	24.700
WGT	FOOD_CONS.	M	110 WEEKS	5	183	183	21.043 g/Ani/D	2.146	13.563	29.800	16.979	23.983
WGT	FOOD_CONS.	M	111 WEEKS	2	79	79	21.086 g/Ani/D	1.481	18.521	25.395	18.952	23.617
WGT	FOOD_CONS.	M	112 WEEKS	1	39	39	19.748 g/Ani/D	3.085	14.328	25.250	15.563	25.250

DOMAIN	PARAM	SEX	ANIMAL AGE#	PRO	# ANI	CNT	MEAN UNIT	STD	MIN	MAX	PERC_05	PERC_95
WGT	FOOD_CONS.	F	6 WEEKS	6	305	305	11.856 g/Ani/D	0.995	9.971	14.273	10.646	13.703
WGT	FOOD_CONS.	F	7 WEEKS	37	789	982	13.102 g/Ani/D	1.839	4.570	36.190	11.407	15.637
WGT	FOOD_CONS.	F	8 WEEKS	176	2291	2688	13.883 g/Ani/D	1.475	9.086	27.300	11.954	16.370
WGT	FOOD_CONS.	F	9 WEEKS	179	2339	2651	14.910 g/Ani/D	1.924	8.871	64.420	12.923	17.800
WGT	FOOD_CONS.	F	10 WEEKS	173	2274	2438	15.564 g/Ani/D	2.699	9.480	80.760	13.340	17.674
WGT	FOOD_CONS.	F	11 WEEKS	178	2344	3529	15.752 g/Ani/D	1.720	0.200	22.157	13.143	18.221
WGT	FOOD_CONS.	F	12 WEEKS	74	1463	1618	16.251 g/Ani/D	1.391	10.218	24.200	14.405	18.551
WGT	FOOD_CONS.	F	13 WEEKS	146	1838	2278	16.614 g/Ani/D	1.455	11.629	25.143	14.393	18.861
WGT	FOOD_CONS.	F	14 WEEKS	76	1478	1623	16.281 g/Ani/D	1.514	8.775	25.050	14.134	18.670
WGT	FOOD_CONS.	F	15 WEEKS	67	1406	1566	16.254 g/Ani/D	1.439	10.085	25.043	14.148	18.785
WGT	FOOD_CONS.	F	16 WEEKS	62	1320	1440	16.047 g/Ani/D	1.623	10.325	25.099	13.830	18.740
WGT	FOOD_CONS.	F	17 WEEKS	62	1318	1443	15.941 g/Ani/D	1.733	9.285	29.241	13.768	18.826
WGT	FOOD_CONS.	F	18 WEEKS	61	1318	1598	15.739 g/Ani/D	1.569	8.010	24.609	13.586	18.309
WGT	FOOD_CONS.	F	19 WEEKS	58	1158	1385	15.761 g/Ani/D	1.579	9.909	25.786	13.475	18.214
WGT	FOOD_CONS.	F	20 WEEKS	51	1121	1499	15.785 g/Ani/D	1.624	2.864	24.494	13.506	18.373
WGT	FOOD_CONS.	F	21 WEEKS	32	721	736	15.839 g/Ani/D	1.434	12.857	23.812	14.031	18.532
WGT	FOOD_CONS.	F	22 WEEKS	37	583	613	15.713 g/Ani/D	1.600	11.573	22.472	13.303	18.190
WGT	FOOD_CONS.	F	23 WEEKS	37	598	663	15.797 g/Ani/D	1.570	2.307	23.315	13.700	18.124
WGT	FOOD_CONS.	F	24 WEEKS	30	530	655	15.698 g/Ani/D	1.624	4.967	24.887	13.597	18.733
WGT	FOOD_CONS.	F	25 WEEKS	15	493	528	15.612 g/Ani/D	1.292	12.932	22.220	13.798	17.868
WGT	FOOD_CONS.	F	26 WEEKS	10	300	300	14.691 g/Ani/D	1.499	4.768	21.337	13.031	17.223
WGT	FOOD_CONS.	F	27 WEEKS	13	337	337	15.140 g/Ani/D	1.348	12.234	21.200	13.067	17.339
WGT	FOOD_CONS.	F	28 WEEKS	12	314	319	15.353 g/Ani/D	1.766	12.483	22.882	13.177	18.355
WGT	FOOD_CONS.	F	29 WEEKS	14	457	457	15.400 g/Ani/D	1.597	11.877	23.985	13.294	18.147
WGT	FOOD_CONS.	F	30 WEEKS	11	304	304	15.354 g/Ani/D	1.971	12.551	24.992	12.909	18.697
WGT	FOOD_CONS.	F	31 WEEKS	10	312	312	15.207 g/Ani/D	1.484	12.591	23.350	13.537	17.985
WGT	FOOD_CONS.	F	32 WEEKS	10	318	318	15.194 g/Ani/D	1.762	12.191	23.708	12.557	18.328
WGT	FOOD_CONS.	F	33 WEEKS	9	377	377	15.285 g/Ani/D	1.695	11.980	22.560	12.963	18.236
WGT	FOOD_CONS.	F	34 WEEKS	7	239	239	14.710 g/Ani/D	1.455	12.054	19.215	12.863	17.709
WGT	FOOD_CONS.	F	35 WEEKS	9	273	273	15.321 g/Ani/D	1.463	12.346	21.717	13.617	17.711
WGT	FOOD_CONS.	F	36 WEEKS	8	248	248	14.924 g/Ani/D	1.476	12.063	20.586	13.018	17.646
WGT	FOOD_CONS.	F	37 WEEKS	11	398	408	15.273 g/Ani/D	1.323	12.760	21.460	13.566	17.535
WGT	FOOD_CONS.	F	38 WEEKS	7	238	248	15.213 g/Ani/D	1.515	12.860	18.923	13.317	18.267
WGT	FOOD_CONS.	F	39 WEEKS	6	248	248	15.005 g/Ani/D	1.114	13.071	18.005	13.417	17.256
WGT	FOOD_CONS.	F	40 WEEKS	5	223	223	14.646 g/Ani/D	1.329	12.129	17.766	12.757	16.643
WGT	FOOD_CONS.	F	41 WEEKS	8	373	373	15.158 g/Ani/D	1.102	12.511	18.099	13.646	17.076

DOMAIN	PARAM	SEX	ANIMAL AGE#	PRO	# ANI	CNT	MEAN UNIT	STD	MIN	MAX	PERC_05	PERC_95
WGT	FOOD_CONS.	F	42 WEEKS	5	223	223	14.765 g/Ani/D	1.160	12.864	17.794	13.249	16.871
WGT	FOOD_CONS.	F	43 WEEKS	6	248	248	15.054 g/Ani/D	1.059	12.737	18.029	13.414	17.053
WGT	FOOD_CONS.	F	44 WEEKS	5	223	223	14.817 g/Ani/D	1.212	12.943	17.503	13.260	17.051
WGT	FOOD_CONS.	F	45 WEEKS	8	373	373	15.492 g/Ani/D	1.183	12.737	18.495	13.749	17.401
WGT	FOOD_CONS.	F	46 WEEKS	5	223	223	14.818 g/Ani/D	1.307	12.886	18.123	13.183	16.960
WGT	FOOD_CONS.	F	47 WEEKS	6	248	248	15.362 g/Ani/D	1.033	12.797	17.652	13.817	17.029
WGT	FOOD_CONS.	F	48 WEEKS	5	223	223	14.772 g/Ani/D	1.438	12.434	18.220	12.943	17.594
WGT	FOOD_CONS.	F	49 WEEKS	8	372	372	15.326 g/Ani/D	1.284	13.120	18.600	13.552	17.603
WGT	FOOD_CONS.	F	50 WEEKS	5	223	223	14.394 g/Ani/D	1.222	11.951	17.426	12.806	16.803
WGT	FOOD_CONS.	F	51 WEEKS	6	248	248	15.208 g/Ani/D	1.214	12.274	17.797	13.509	17.509
WGT	FOOD_CONS.	F	52 WEEKS	5	223	223	14.532 g/Ani/D	1.211	12.397	17.600	13.120	16.700
WGT	FOOD_CONS.	F	53 WEEKS	8	372	372	15.556 g/Ani/D	1.540	12.986	22.767	13.498	18.121
WGT	FOOD_CONS.	F	54 WEEKS	5	223	223	14.429 g/Ani/D	1.318	12.300	17.103	12.546	16.833
WGT	FOOD_CONS.	F	55 WEEKS	6	248	248	15.317 g/Ani/D	1.378	12.860	20.249	13.471	18.234
WGT	FOOD_CONS.	F	56 WEEKS	6	243	243	14.866 g/Ani/D	1.386	12.089	18.009	13.171	17.314
WGT	FOOD_CONS.	F	57 WEEKS	7	352	352	15.353 g/Ani/D	1.496	12.186	18.811	13.157	17.689
WGT	FOOD_CONS.	F	58 WEEKS	6	243	243	14.337 g/Ani/D	1.441	11.560	18.126	12.330	16.674
WGT	FOOD_CONS.	F	59 WEEKS	5	207	207	15.273 g/Ani/D	1.177	12.989	18.267	13.267	17.389
WGT	FOOD_CONS.	F	60 WEEKS	6	283	283	15.122 g/Ani/D	1.168	11.703	18.460	13.643	17.263
WGT	FOOD_CONS.	F	61 WEEKS	5	231	231	15.835 g/Ani/D	1.248	13.006	18.036	13.863	17.824
WGT	FOOD_CONS.	F	62 WEEKS	5	203	203	14.615 g/Ani/D	1.354	12.049	17.593	12.700	16.846
WGT	FOOD_CONS.	F	63 WEEKS	4	167	167	15.946 g/Ani/D	2.035	12.357	24.660	13.400	18.646
WGT	FOOD_CONS.	F	64 WEEKS	5	202	202	14.976 g/Ani/D	1.233	12.680	17.654	13.300	17.123
WGT	FOOD_CONS.	F	65 WEEKS	6	272	272	15.706 g/Ani/D	1.273	12.054	18.592	13.851	18.010
WGT	FOOD_CONS.	F	66 WEEKS	4	197	197	15.010 g/Ani/D	1.061	12.494	17.229	13.517	16.689
WGT	FOOD_CONS.	F	67 WEEKS	3	161	161	15.147 g/Ani/D	1.453	10.529	18.214	13.010	17.133
WGT	FOOD_CONS.	F	68 WEEKS	4	197	197	15.008 g/Ani/D	1.989	4.649	17.623	13.514	16.837
WGT	FOOD_CONS.	F	69 WEEKS	5	270	270	15.527 g/Ani/D	1.532	10.914	18.608	13.514	17.638
WGT	FOOD_CONS.	F	70 WEEKS	4	196	196	15.034 g/Ani/D	1.227	12.046	17.871	13.563	17.417
WGT	FOOD_CONS.	F	71 WEEKS	3	160	160	15.649 g/Ani/D	1.264	13.737	18.510	13.968	17.681
WGT	FOOD_CONS.	F	72 WEEKS	4	195	195	14.555 g/Ani/D	1.078	12.829	17.297	12.946	16.214
WGT	FOOD_CONS.	F	73 WEEKS	5	269	269	15.511 g/Ani/D	1.707	12.226	19.805	12.689	18.430
WGT	FOOD_CONS.	F	74 WEEKS	4	194	194	14.901 g/Ani/D	1.298	11.180	17.037	13.186	16.829
WGT	FOOD_CONS.	F	75 WEEKS	3	160	160	15.187 g/Ani/D	1.394	12.529	18.190	12.709	17.962
WGT	FOOD_CONS.	F	76 WEEKS	4	193	193	14.851 g/Ani/D	1.275	12.394	17.909	12.654	17.006
WGT	FOOD_CONS.	F	77 WEEKS	5	266	266	16.259 g/Ani/D	1.347	13.448	19.265	14.028	18.167

DOMAIN	PARAM	SEX	ANIMAL AGE#	PRO	# ANI	CNT	MEAN UNIT	STD	MIN	MAX	PERC_05	PERC_95
WGT	FOOD_CONS.	F	78 WEEKS	4	192	192	14.867 g/Ani/D	1.142	11.320	17.696	13.486	16.054
WGT	FOOD_CONS.	F	79 WEEKS	3	158	158	15.220 g/Ani/D	1.397	10.286	17.571	13.180	17.107
WGT	FOOD_CONS.	F	80 WEEKS	4	191	191	14.984 g/Ani/D	1.295	12.671	18.539	12.857	16.879
WGT	FOOD_CONS.	F	81 WEEKS	5	259	259	15.717 g/Ani/D	1.254	12.845	18.624	14.025	18.240
WGT	FOOD_CONS.	F	82 WEEKS	4	190	190	14.706 g/Ani/D	1.289	12.236	17.104	13.063	16.949
WGT	FOOD_CONS.	F	83 WEEKS	3	154	154	15.323 g/Ani/D	1.083	11.736	17.117	13.399	17.023
WGT	FOOD_CONS.	F	84 WEEKS	4	187	187	15.112 g/Ani/D	1.157	11.920	17.336	13.618	16.574
WGT	FOOD_CONS.	F	85 WEEKS	5	255	255	15.499 g/Ani/D	1.395	11.579	18.962	13.286	17.734
WGT	FOOD_CONS.	F	86 WEEKS	4	186	186	15.055 g/Ani/D	1.417	12.726	18.414	12.906	17.596
WGT	FOOD_CONS.	F	87 WEEKS	3	152	152	15.247 g/Ani/D	1.457	12.674	18.829	13.190	17.462
WGT	FOOD_CONS.	F	88 WEEKS	4	184	184	15.030 g/Ani/D	1.272	12.766	17.607	13.154	16.986
WGT	FOOD_CONS.	F	89 WEEKS	5	253	253	15.503 g/Ani/D	1.790	9.043	19.900	13.451	18.171
WGT	FOOD_CONS.	F	90 WEEKS	4	182	182	14.598 g/Ani/D	1.367	10.886	17.807	12.720	16.857
WGT	FOOD_CONS.	F	91 WEEKS	3	148	148	15.698 g/Ani/D	1.629	12.020	19.671	13.437	18.579
WGT	FOOD_CONS.	F	92 WEEKS	4	178	178	14.539 g/Ani/D	1.618	9.737	17.629	12.427	17.143
WGT	FOOD_CONS.	F	93 WEEKS	5	248	248	15.364 g/Ani/D	1.598	10.906	18.744	13.400	18.390
WGT	FOOD_CONS.	F	94 WEEKS	4	171	171	14.937 g/Ani/D	1.416	12.223	17.781	13.068	17.550
WGT	FOOD_CONS.	F	95 WEEKS	3	143	143	16.056 g/Ani/D	1.611	12.196	19.843	13.400	18.429
WGT	FOOD_CONS.	F	96 WEEKS	4	167	167	15.123 g/Ani/D	1.432	12.407	18.779	13.337	17.379
WGT	FOOD_CONS.	F	97 WEEKS	5	239	239	15.784 g/Ani/D	1.663	12.597	21.618	13.660	18.508
WGT	FOOD_CONS.	F	98 WEEKS	4	163	163	15.006 g/Ani/D	1.824	10.946	17.954	11.293	17.867
WGT	FOOD_CONS.	F	99 WEEKS	3	138	138	16.134 g/Ani/D	1.767	9.486	19.648	14.064	19.314
WGT	FOOD_CONS.	F	100 WEEKS	4	159	159	15.054 g/Ani/D	1.351	11.018	17.433	13.329	17.186
WGT	FOOD_CONS.	F	101 WEEKS	5	227	227	16.216 g/Ani/D	2.180	11.534	31.371	13.671	19.399
WGT	FOOD_CONS.	F	102 WEEKS	4	158	158	14.972 g/Ani/D	2.017	8.786	18.767	12.714	17.807
WGT	FOOD_CONS.	F	103 WEEKS	3	132	132	15.644 g/Ani/D	1.504	10.600	18.600	13.657	18.081
WGT	FOOD_CONS.	F	104 WEEKS	4	157	157	15.309 g/Ani/D	1.447	11.779	19.157	12.961	18.076
WGT	FOOD_CONS.	F	105 WEEKS	5	214	214	15.925 g/Ani/D	2.052	11.300	22.400	12.762	19.705
WGT	FOOD_CONS.	F	106 WEEKS	4	153	153	15.237 g/Ani/D	1.450	10.043	18.595	13.564	17.971
WGT	FOOD_CONS.	F	107 WEEKS	3	126	126	15.164 g/Ani/D	1.474	11.986	18.400	12.254	16.876
WGT	FOOD_CONS.	F	108 WEEKS	4	150	150	14.635 g/Ani/D	1.558	10.964	18.157	11.881	17.093
WGT	FOOD_CONS.	F	109 WEEKS	6	240	240	15.093 g/Ani/D	2.127	5.624	19.480	12.157	18.046
WGT	FOOD_CONS.	F	110 WEEKS	5	196	196	15.493 g/Ani/D	2.322	7.454	20.475	11.400	18.118
WGT	FOOD_CONS.	F	111 WEEKS	2	75	75	16.133 g/Ani/D	1.862	13.511	23.128	13.762	19.416

DOMAIN	PARAM	SEX	ANIMAL AGE#	PRO	# ANI	CNT	MEAN UNIT	STD	MIN	MAX	PERC_05	PERC_95
WGT	WATER_CONS.	M	7 WEEKS	6	125	130	20.975 ml/Ani/D	2.523	17.327	28.476	17.706	25.960
WGT	WATER_CONS.	M	8 WEEKS	6	111	126	23.076 ml/Ani/D	2.527	16.830	28.472	18.996	26.428
WGT	WATER_CONS.	M	9 WEEKS	4	81	112	25.196 ml/Ani/D	2.436	19.860	30.450	21.070	29.165
WGT	WATER_CONS.	M	10 WEEKS	4	80	115	24.811 ml/Ani/D	3.214	20.029	32.396	21.101	31.016
WGT	WATER_CONS.	M	11 WEEKS	7	135	160	26.349 ml/Ani/D	2.103	22.716	31.036	23.339	29.760
WGT	WATER_CONS.	M	12 WEEKS	4	100	120	25.706 ml/Ani/D	2.024	22.468	30.148	22.840	29.411
WGT	WATER_CONS.	M	13 WEEKS	2	70	90	26.092 ml/Ani/D	2.288	21.288	29.954	23.287	29.411
WGT	WATER_CONS.	M	14 WEEKS	3	70	85	25.630 ml/Ani/D	2.169	22.838	30.421	22.875	28.578
WGT	WATER_CONS.	M	15 WEEKS	2	65	75	26.917 ml/Ani/D	2.518	23.495	32.103	24.054	32.103
WGT	WATER_CONS.	M	16 WEEKS	2	65	75	26.057 ml/Ani/D	2.741	22.306	31.219	22.586	31.219
WGT	WATER_CONS.	M	17 WEEKS	2	65	75	25.569 ml/Ani/D	2.506	22.438	30.695	22.649	30.695
WGT	WATER_CONS.	M	18 WEEKS	5	120	120	29.798 ml/Ani/D	16.999	21.796	109.864	22.542	32.627
WGT	WATER_CONS.	M	19 WEEKS	3	90	90	25.831 ml/Ani/D	3.098	21.066	32.755	21.452	29.612
WGT	WATER_CONS.	M	20 WEEKS	1	60	60	26.235 ml/Ani/D	3.308	21.287	33.841	22.284	33.841
WGT	WATER_CONS.	M	21 WEEKS	1	60	60	26.656 ml/Ani/D	3.133	22.914	34.708	23.856	34.708
WGT	WATER_CONS.	M	22 WEEKS	5	79	79	25.615 ml/Ani/D	3.010	21.005	32.604	21.756	32.604
WGT	WATER_CONS.	M	23 WEEKS	4	80	100	25.295 ml/Ani/D	3.193	20.492	34.057	21.799	30.575
WGT	WATER_CONS.	M	24 WEEKS	1	60	60	24.782 ml/Ani/D	3.415	19.363	30.526	20.199	30.526
WGT	WATER_CONS.	M	28 WEEKS	1	60	60	26.672 ml/Ani/D	3.399	20.898	33.245	23.415	33.245
WGT	WATER_CONS.	M	31 WEEKS	1	5	5	23.685 ml/Ani/D	0.000	23.685	23.685		23.685
WGT	WATER_CONS.	M	32 WEEKS	2	65	75	25.636 ml/Ani/D	2.823	21.436	30.754	21.955	30.754
WGT	WATER_CONS.	M	33 WEEKS	1	5	15	24.344 ml/Ani/D	0.955	23.583	25.642	23.806	25.642
WGT	WATER_CONS.	M	34 WEEKS	1	5	15	24.656 ml/Ani/D	0.101	24.576	24.793	24.599	24.793
WGT	WATER_CONS.	M	35 WEEKS	1	5	10	23.939 ml/Ani/D	0.798	23.182	24.696	24.696	24.696
WGT	WATER_CONS.	M	36 WEEKS	1	60	60	25.084 ml/Ani/D	2.662	20.987	29.741	21.925	29.741
WGT	WATER_CONS.	M	40 WEEKS	1	60	60	25.339 ml/Ani/D	3.531	21.147	32.360	21.465	32.360
WGT	WATER_CONS.	M	44 WEEKS	1	60	60	24.269 ml/Ani/D	3.338	19.194	30.904	19.757	30.904
WGT	WATER_CONS.	M	48 WEEKS	1	59	59	24.312 ml/Ani/D	2.958	20.117	29.566	20.314	29.566
WGT	WATER_CONS.	M	52 WEEKS	1	59	59	25.247 ml/Ani/D	2.591	21.070	30.419	21.512	30.419
WGT	WATER_CONS.	M	56 WEEKS	1	58	58	23.747 ml/Ani/D	3.888	17.133	29.971	17.361	29.971
WGT	WATER_CONS.	M	60 WEEKS	1	58	58	24.017 ml/Ani/D	3.166	19.356	30.843	20.383	30.843
WGT	WATER_CONS.	M	64 WEEKS	1	58	58	23.792 ml/Ani/D	3.606	18.430	29.860	18.793	29.860
WGT	WATER_CONS.	M	68 WEEKS	1	58	58	24.593 ml/Ani/D	3.321	19.952	29.164	20.313	29.164
WGT	WATER_CONS.	M	72 WEEKS	1	56	56	25.640 ml/Ani/D	3.512	21.080	31.256	21.185	31.256
WGT	WATER_CONS.	M	76 WEEKS	1	55	55	25.633 ml/Ani/D	4.447	18.813	36.631	21.495	36.631
WGT	WATER_CONS.	M	80 WEEKS	1	55	55	26.021 ml/Ani/D	3.695	21.015	33.160	21.095	33.160

DOMAIN	PARAM	SEX	ANIMAL AGE#	PRO	# ANI	CNT	MEAN UNIT	STD	MIN	MAX	PERC_05	PERC_95
WGT	WATER_CONS.	M	84 WEEKS	1	54	54	24.635 ml/Ani/D	3.319	20.770	31.502	21.012	31.502
WGT	WATER_CONS.	M	88 WEEKS	1	54	54	24.140 ml/Ani/D	2.096	19.377	28.004	21.042	28.004
WGT	WATER_CONS.	M	92 WEEKS	1	52	52	22.594 ml/Ani/D	2.970	18.322	29.030	19.296	29.030
WGT	WATER_CONS.	M	96 WEEKS	1	51	51	22.017 ml/Ani/D	2.920	16.073	26.327	18.587	26.327
WGT	WATER_CONS.	M	100 WEEKS	1	50	50	24.720 ml/Ani/D	3.334	20.989	31.099	21.126	31.099
WGT	WATER_CONS.	M	104 WEEKS	1	48	48	25.449 ml/Ani/D	4.163	18.876	33.408	20.246	33.408
WGT	WATER_CONS.	M	108 WEEKS	1	46	46	26.144 ml/Ani/D	3.780	21.098	32.495	21.153	32.495
WGT	WATER_CONS.	M	111 WEEKS	1	44	44	24.416 ml/Ani/D	3.768	18.428	31.009	20.966	31.009

DOMAIN	PARAM	SEX	ANIMAL AGE#	PRO	# ANI	CNT	MEAN UNIT	STD	MIN	MAX	PERC_05	PERC_95
WGT	WATER_CONS.	F	7 WEEKS	6	125	130	18.944 ml/Ani/D	1.604	15.480	21.818	17.049	21.591
WGT	WATER_CONS.	F	8 WEEKS	4	95	100	20.611 ml/Ani/D	2.063	16.574	23.730	16.874	23.098
WGT	WATER_CONS.	F	9 WEEKS	2	65	70	23.337 ml/Ani/D	1.849	20.210	26.176	20.526	26.176
WGT	WATER_CONS.	F	10 WEEKS	3	70	85	20.663 ml/Ani/D	1.735	17.600	23.313	18.302	23.144
WGT	WATER_CONS.	F	11 WEEKS	7	135	150	21.698 ml/Ani/D	2.593	16.724	28.738	17.732	25.340
WGT	WATER_CONS.	F	12 WEEKS	4	100	120	22.586 ml/Ani/D	2.262	19.084	27.313	19.899	27.038
WGT	WATER_CONS.	F	13 WEEKS	2	70	90	22.192 ml/Ani/D	2.300	18.073	25.928	18.403	25.679
WGT	WATER_CONS.	F	14 WEEKS	3	75	105	21.919 ml/Ani/D	3.389	16.348	32.409	18.437	26.148
WGT	WATER_CONS.	F	15 WEEKS	2	70	90	24.915 ml/Ani/D	2.658	20.858	32.560	21.887	28.255
WGT	WATER_CONS.	F	16 WEEKS	2	70	90	23.150 ml/Ani/D	1.749	19.041	25.824	20.470	25.051
WGT	WATER_CONS.	F	17 WEEKS	2	65	70	22.334 ml/Ani/D	1.829	18.724	24.288	19.854	24.288
WGT	WATER_CONS.	F	18 WEEKS	6	125	135	22.516 ml/Ani/D	2.647	15.282	26.976	19.724	26.455
WGT	WATER_CONS.	F	19 WEEKS	4	95	105	22.359 ml/Ani/D	2.772	15.520	26.604	18.350	26.317
WGT	WATER_CONS.	F	20 WEEKS	2	65	75	23.071 ml/Ani/D	1.322	19.883	25.431	21.419	25.431
WGT	WATER_CONS.	F	21 WEEKS	1	60	60	25.607 ml/Ani/D	2.823	21.496	31.017	22.091	31.017
WGT	WATER_CONS.	F	22 WEEKS	5	80	80	22.410 ml/Ani/D	2.627	16.774	26.756	18.736	26.756
WGT	WATER_CONS.	F	23 WEEKS	4	80	100	23.718 ml/Ani/D	2.614	18.634	29.564	18.890	27.400
WGT	WATER_CONS.	F	24 WEEKS	1	60	60	21.657 ml/Ani/D	1.827	17.824	25.182	19.216	25.182
WGT	WATER_CONS.	F	28 WEEKS	1	60	60	23.444 ml/Ani/D	2.119	20.360	27.992	21.192	27.992
WGT	WATER_CONS.	F	32 WEEKS	1	60	60	21.741 ml/Ani/D	1.809	19.487	25.500	19.953	25.500
WGT	WATER_CONS.	F	34 WEEKS	1	5	5	21.415 ml/Ani/D	0.000	21.415	21.415		21.415
WGT	WATER_CONS.	F	35 WEEKS	1	5	15	21.805 ml/Ani/D	0.671	21.346	22.722	22.722	22.722
WGT	WATER_CONS.	F	36 WEEKS	2	65	75	21.817 ml/Ani/D	1.714	19.509	25.620	19.530	25.620
WGT	WATER_CONS.	F	37 WEEKS	1	5	15	21.591 ml/Ani/D	0.310	21.199	21.927	21.647	21.927
WGT	WATER_CONS.	F	38 WEEKS	1	5	10	21.204 ml/Ani/D	1.408	19.869	22.540	22.540	22.540
WGT	WATER_CONS.	F	40 WEEKS	1	60	60	21.253 ml/Ani/D	1.315	19.238	23.030	19.534	23.030
WGT	WATER_CONS.	F	44 WEEKS	1	60	60	22.385 ml/Ani/D	1.685	19.697	25.376	20.454	25.376
WGT	WATER_CONS.	F	48 WEEKS	1	60	60	21.890 ml/Ani/D	1.790	19.248	25.595	20.137	25.595
WGT	WATER_CONS.	F	52 WEEKS	1	60	60	24.187 ml/Ani/D	2.010	21.953	28.713	22.035	28.713
WGT	WATER_CONS.	F	56 WEEKS	1	60	60	22.612 ml/Ani/D	2.363	17.604	25.915	19.750	25.915
WGT	WATER_CONS.	F	60 WEEKS	1	60	60	23.710 ml/Ani/D	2.253	20.494	29.135	21.174	29.135
WGT	WATER_CONS.	F	64 WEEKS	1	60	60	23.202 ml/Ani/D	2.090	19.841	27.422	20.392	27.422
WGT	WATER_CONS.	F	68 WEEKS	1	60	60	23.315 ml/Ani/D	2.541	19.918	28.952	20.592	28.952
WGT	WATER_CONS.	F	72 WEEKS	1	60	60	25.442 ml/Ani/D	2.803	21.084	31.747	21.275	31.747
WGT	WATER_CONS.	F	76 WEEKS	1	58	58	25.220 ml/Ani/D	3.158	21.339	31.882	22.945	31.882
WGT	WATER_CONS.	F	80 WEEKS	1	57	57	26.368 ml/Ani/D	3.039	20.967	30.794	23.472	30.794



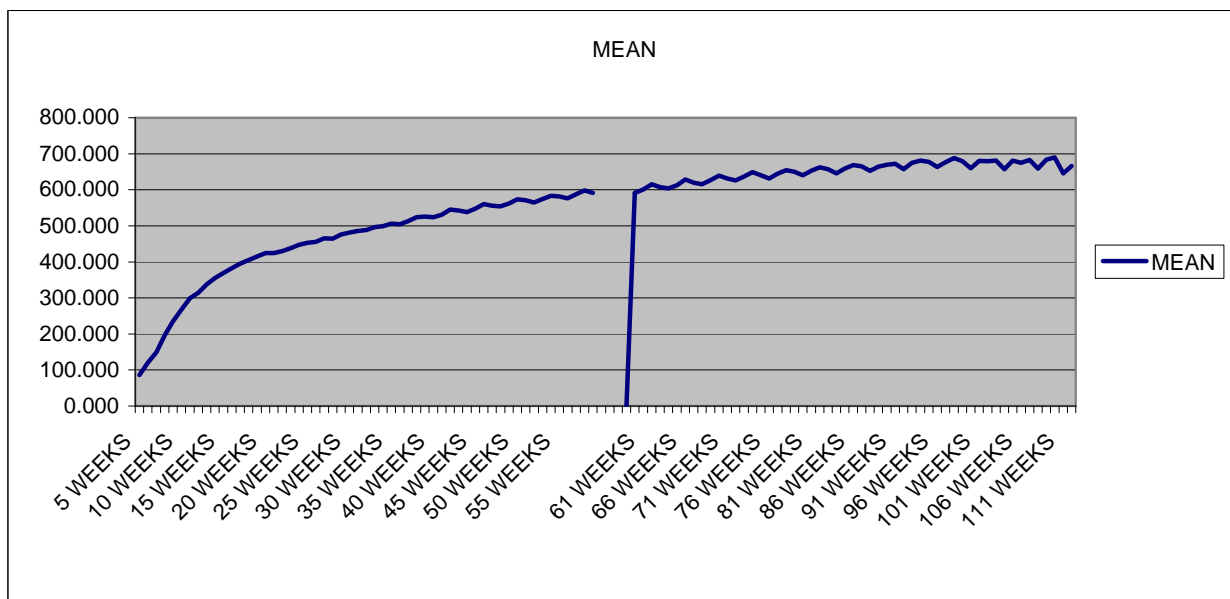
DOMAIN	PARAM	SEX	ANIMAL	AGE#	PRO	# ANI	CNT	MEAN UNIT	STD	MIN	MAX	PERC_05	PERC_95
WGT	WATER_CONS.	F	84 WEEKS		1	55	55	26.658 ml/Ani/D	2.703	21.261	30.950	24.335	29.707
WGT	WATER_CONS.	F	88 WEEKS		1	55	55	26.821 ml/Ani/D	2.044	23.561	32.228	24.952	29.576
WGT	WATER_CONS.	F	92 WEEKS		1	55	55	24.416 ml/Ani/D	2.500	18.804	28.052	22.523	28.052
WGT	WATER_CONS.	F	96 WEEKS		1	53	53	25.087 ml/Ani/D	3.020	21.589	33.123	21.905	33.123
WGT	WATER_CONS.	F	100 WEEKS		1	50	50	27.236 ml/Ani/D	3.517	22.744	35.795	23.459	30.879
WGT	WATER_CONS.	F	104 WEEKS		1	48	48	27.545 ml/Ani/D	3.248	22.756	33.293	24.057	31.406
WGT	WATER_CONS.	F	108 WEEKS		1	46	46	28.194 ml/Ani/D	3.716	22.556	33.136	24.259	33.136
WGT	WATER_CONS.	F	111 WEEKS		1	41	41	27.065 ml/Ani/D	3.084	23.220	33.212	24.144	33.212

**Table 1: Body Weight Development of Males over the Study weeks [g]**

ANIMAL AGE	Number Studies	Number Animals	MEAN	STD	MIN	MAX
5 WEEKS	5	286	85.812	18.962	58.500	123.700
6 WEEKS	22	673	119.902	22.765	77.400	189.250
7 WEEKS	250	3676	149.296	27.806	57.920	262.010
8 WEEKS	265	3873	195.837	26.768	99.100	308.310
9 WEEKS	272	4009	235.170	28.340	125.070	340.620
10 WEEKS	255	3834	267.589	27.217	172.190	368.790
11 WEEKS	252	3781	298.882	27.205	179.080	401.560
12 WEEKS	203	2720	314.663	29.813	223.270	418.480
13 WEEKS	203	2623	337.790	30.839	238.200	448.370
14 WEEKS	123	2116	355.327	33.401	227.100	470.680
15 WEEKS	104	2018	369.577	34.999	256.470	495.320
16 WEEKS	90	1931	382.339	37.645	226.090	516.280
17 WEEKS	90	1945	394.911	38.320	263.500	531.880
18 WEEKS	86	1906	405.101	39.512	268.170	552.890
19 WEEKS	83	1774	414.526	40.742	272.400	560.130
20 WEEKS	79	1587	424.383	41.758	272.760	591.460
21 WEEKS	64	1174	424.110	42.634	276.750	578.090
22 WEEKS	56	772	429.770	43.580	278.880	592.410
23 WEEKS	60	975	438.058	45.451	285.420	606.900
24 WEEKS	49	723	447.617	45.952	286.670	615.160
25 WEEKS	27	686	452.754	46.752	293.720	628.200
26 WEEKS	17	367	455.839	45.792	299.810	581.860
27 WEEKS	23	666	465.307	46.792	305.490	635.000
28 WEEKS	20	543	464.756	46.834	325.680	602.510
29 WEEKS	19	634	476.144	46.601	309.500	659.100
30 WEEKS	12	331	481.035	45.554	343.260	614.480
31 WEEKS	17	614	485.751	47.482	299.800	672.400
32 WEEKS	16	563	488.057	48.074	349.480	619.160
33 WEEKS	15	527	496.157	50.292	357.340	685.700
34 WEEKS	10	242	499.372	48.742	360.640	627.300
35 WEEKS	16	451	505.878	51.702	364.680	703.600
36 WEEKS	12	365	504.351	51.685	357.660	639.480
37 WEEKS	13	387	513.645	51.145	384.100	725.900
38 WEEKS	7	158	523.564	48.494	407.000	644.500
39 WEEKS	12	415	526.014	53.581	392.100	736.400
40 WEEKS	9	335	523.633	54.676	367.330	664.870
41 WEEKS	11	367	530.922	54.463	390.200	756.600
42 WEEKS	5	143	545.070	49.801	428.500	666.600
43 WEEKS	9	391	542.337	56.901	398.460	767.500
44 WEEKS	6	311	538.217	57.899	371.570	685.960
45 WEEKS	8	343	547.884	57.102	399.800	784.000
46 WEEKS	3	124	560.103	53.314	435.000	682.900
47 WEEKS	9	391	555.977	59.215	398.900	798.800
48 WEEKS	6	310	554.181	60.660	374.560	720.230
49 WEEKS	8	343	561.604	59.069	408.800	782.300
50 WEEKS	3	122	573.500	55.150	443.100	698.600
51 WEEKS	9	390	570.828	60.618	424.100	804.100
52 WEEKS	6	307	564.452	63.577	379.570	743.700
53 WEEKS	8	342	574.851	62.249	424.600	815.200
54 WEEKS	3	121	583.006	58.090	445.900	722.500
55 WEEKS	9	387	581.172	64.008	437.900	827.900
56 WEEKS	7	325	576.342	64.468	388.650	776.080
57 WEEKS	7	317	587.423	64.882	446.010	835.900
58 WEEKS	4	139	598.113	60.397	451.900	737.900
59 WEEKS	8	346	590.916	66.628	446.000	843.400

**Table 1: continued**

ANIMAL AGE	Number Studies	Number Animals	MEAN	STD	MIN	MAX
60 WEEKS	6	305	590.993	68.336	378.020	797.500
61 WEEKS	6	260	601.073	67.443	452.160	854.600
62 WEEKS	3	101	615.008	65.922	455.600	756.800
63 WEEKS	7	305	607.625	69.669	453.200	870.900
64 WEEKS	5	266	603.700	75.155	372.040	811.100
65 WEEKS	5	254	612.890	70.637	456.160	887.700
66 WEEKS	2	96	628.950	68.673	464.800	779.400
67 WEEKS	6	300	619.853	73.110	461.330	905.500
68 WEEKS	5	266	615.619	78.209	388.980	835.800
69 WEEKS	5	251	626.771	73.350	468.950	920.000
70 WEEKS	2	94	639.143	70.851	469.270	794.480
71 WEEKS	6	296	631.005	74.014	469.900	927.200
72 WEEKS	5	261	625.878	81.009	412.240	853.900
73 WEEKS	5	250	636.566	76.332	467.100	945.400
74 WEEKS	2	92	649.257	72.446	475.100	817.600
75 WEEKS	6	296	640.200	77.270	471.100	951.100
76 WEEKS	5	258	630.909	82.818	416.740	873.400
77 WEEKS	5	249	644.414	79.238	433.500	968.200
78 WEEKS	2	91	654.384	74.443	479.800	829.800
79 WEEKS	6	293	649.557	78.725	472.400	987.300
80 WEEKS	5	257	639.955	87.424	383.710	887.400
81 WEEKS	5	245	652.412	78.947	456.200	996.600
82 WEEKS	2	89	661.955	75.134	485.900	850.800
83 WEEKS	6	291	657.347	81.731	403.900	993.200
84 WEEKS	5	251	645.809	92.165	354.680	930.900
85 WEEKS	5	243	658.519	82.367	447.500	1012.100
86 WEEKS	2	86	668.514	81.329	459.200	876.300
87 WEEKS	6	288	664.827	85.411	414.700	1021.300
88 WEEKS	5	246	652.844	98.036	260.270	908.700
89 WEEKS	5	239	664.245	90.622	326.800	1025.400
90 WEEKS	2	86	669.337	86.635	389.200	871.300
91 WEEKS	6	276	671.832	86.639	453.500	1022.700
92 WEEKS	5	242	656.682	96.697	358.350	902.400
93 WEEKS	5	231	674.639	87.993	417.000	1037.800
94 WEEKS	2	83	681.352	93.071	340.040	896.500
95 WEEKS	6	268	677.230	90.248	461.660	1042.200
96 WEEKS	5	237	663.050	95.372	410.960	899.500
97 WEEKS	5	225	676.146	88.973	481.610	1036.200
98 WEEKS	2	79	688.498	92.114	487.900	903.700
99 WEEKS	6	260	679.315	90.149	477.700	1043.100
100 WEEKS	5	229	660.146	101.101	390.830	923.700
101 WEEKS	5	218	680.433	92.819	451.200	1046.600
102 WEEKS	2	76	679.445	96.277	470.800	930.400
103 WEEKS	6	255	681.371	97.501	417.300	1048.100
104 WEEKS	5	217	657.011	105.054	390.870	928.300
105 WEEKS	5	210	680.784	99.235	399.710	1078.700
106 WEEKS	2	66	674.553	114.949	366.300	928.400
107 WEEKS	6	242	682.864	100.353	375.510	1095.800
108 WEEKS	5	204	659.079	108.463	282.400	934.100
109 WEEKS	5	198	683.958	98.640	407.800	1105.800
110 WEEKS	5	172	689.770	98.068	396.360	915.300
111 WEEKS	3	127	645.590	109.184	367.860	988.200
112 WEEKS	1	40	666.082	110.302	402.530	904.590

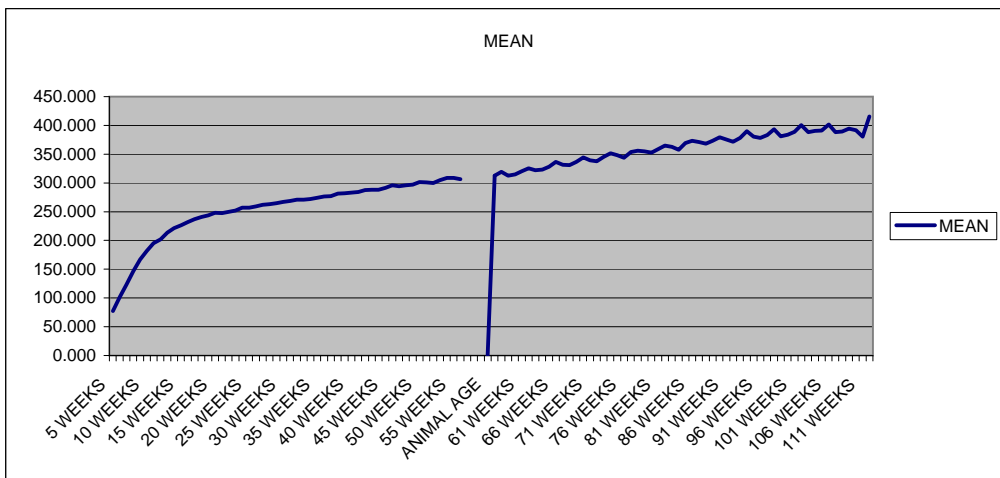


**Table 2: Body weight development of Females over the Study Weeks [g]**

ANIMAL AGE	Number Studies	Number Animals	MEAN	STD	MIN	MAX
5 WEEKS	5	286	77.348	15.522	51.160	108.520
6 WEEKS	22	673	101.321	16.765	65.900	156.850
7 WEEKS	246	3637	122.765	19.081	48.030	212.680
8 WEEKS	250	3672	146.811	16.214	82.150	216.030
9 WEEKS	246	3658	166.604	15.634	108.900	240.700
10 WEEKS	240	3619	181.834	15.335	125.100	242.100
11 WEEKS	254	3791	195.075	17.109	109.000	261.840
12 WEEKS	205	2745	202.154	18.626	127.420	330.140
13 WEEKS	207	2686	213.690	18.021	140.930	288.540
14 WEEKS	124	2248	221.284	18.614	150.340	293.690
15 WEEKS	107	2133	226.537	18.726	159.950	303.460
16 WEEKS	98	1996	232.181	18.882	135.560	308.430
17 WEEKS	97	1986	236.712	19.516	146.380	317.810
18 WEEKS	89	1940	240.836	18.203	178.790	319.410
19 WEEKS	86	1800	243.742	18.874	177.850	319.000
20 WEEKS	80	1592	248.222	19.195	185.040	330.890
21 WEEKS	65	1208	247.698	19.358	190.750	323.800
22 WEEKS	57	787	249.591	18.971	188.560	327.390
23 WEEKS	60	1006	251.993	19.690	187.970	340.840
24 WEEKS	49	784	257.037	20.374	166.600	350.660
25 WEEKS	27	726	257.182	20.258	172.320	350.320
26 WEEKS	17	372	259.103	20.032	157.540	316.600
27 WEEKS	23	671	261.949	20.363	131.380	326.240
28 WEEKS	20	558	263.226	20.997	198.430	333.100
29 WEEKS	21	659	264.909	20.465	207.050	335.900
30 WEEKS	15	355	266.849	21.388	205.060	346.100
31 WEEKS	18	622	268.595	21.772	209.170	342.400
32 WEEKS	16	566	270.748	22.980	201.800	343.050
33 WEEKS	15	543	270.623	22.138	213.300	346.200
34 WEEKS	10	243	271.854	23.055	220.900	340.250
35 WEEKS	16	455	274.418	23.398	216.600	354.710
36 WEEKS	13	372	276.665	24.805	206.470	353.290
37 WEEKS	15	406	276.970	24.476	222.400	370.480
38 WEEKS	9	175	281.301	25.731	219.650	386.350
39 WEEKS	12	419	282.130	24.897	225.010	374.660
40 WEEKS	9	337	283.040	24.934	211.350	362.500
41 WEEKS	11	371	284.101	26.703	224.200	433.900
42 WEEKS	5	145	287.468	24.870	238.500	357.800
43 WEEKS	9	394	288.239	27.641	222.300	419.700
44 WEEKS	6	312	288.320	28.262	210.020	393.130
45 WEEKS	8	346	291.463	27.125	224.500	374.400
46 WEEKS	3	125	295.656	29.116	240.500	384.400
47 WEEKS	9	394	294.256	29.323	226.210	414.010
48 WEEKS	6	312	296.056	31.351	211.570	424.590
49 WEEKS	8	346	296.759	29.452	222.300	392.800
50 WEEKS	3	125	301.333	30.752	239.330	396.050
51 WEEKS	9	394	300.982	32.137	227.340	427.460
52 WEEKS	6	311	299.783	32.536	212.850	406.100
53 WEEKS	8	346	304.744	33.400	226.870	402.390
54 WEEKS	3	125	308.826	34.001	242.700	410.200
55 WEEKS	9	394	308.662	34.692	235.420	446.010
56 WEEKS	7	331	306.457	36.140	211.240	424.050

**Table 2: continued**

ANIMAL AGE	Number Studies	Number Animals	MEAN	STD	MIN	MAX
57 WEEKS	7	326	312.711	35.614	228.850	428.500
58 WEEKS	4	145	319.378	36.775	244.800	423.700
59 WEEKS	8	353	312.793	37.723	229.300	453.100
60 WEEKS	6	311	315.061	38.419	217.740	430.890
61 WEEKS	6	265	320.518	38.478	234.910	443.100
62 WEEKS	3	105	325.139	39.099	251.300	432.100
63 WEEKS	7	313	322.315	40.952	230.920	461.200
64 WEEKS	6	276	323.011	41.994	215.220	450.300
65 WEEKS	6	265	328.217	41.805	236.020	463.210
66 WEEKS	2	99	336.666	43.535	245.100	460.800
67 WEEKS	6	307	331.682	44.617	232.660	474.600
68 WEEKS	5	271	330.715	46.985	215.970	462.020
69 WEEKS	5	258	336.742	45.997	231.590	505.600
70 WEEKS	2	99	344.103	46.037	245.510	471.140
71 WEEKS	6	304	339.101	47.333	235.950	523.400
72 WEEKS	5	269	337.743	49.460	217.280	474.300
73 WEEKS	5	257	345.474	48.980	243.320	557.870
74 WEEKS	2	97	351.691	49.076	251.800	472.300
75 WEEKS	6	303	348.110	50.517	234.960	563.300
76 WEEKS	5	263	343.484	50.140	217.910	477.900
77 WEEKS	5	255	353.784	51.714	238.900	576.900
78 WEEKS	2	96	356.182	51.086	246.200	475.540
79 WEEKS	6	298	354.874	52.168	179.440	533.400
80 WEEKS	5	261	352.853	53.071	226.690	485.220
81 WEEKS	5	250	358.816	50.901	257.170	545.300
82 WEEKS	2	94	364.910	52.369	244.020	485.850
83 WEEKS	6	294	362.680	52.885	234.020	546.500
84 WEEKS	5	254	357.618	54.626	226.420	501.720
85 WEEKS	5	247	369.539	51.045	262.390	551.500
86 WEEKS	2	92	373.090	53.765	250.200	508.400
87 WEEKS	6	289	371.231	52.880	259.690	568.060
88 WEEKS	5	251	368.141	57.333	229.320	525.700
89 WEEKS	5	244	372.965	53.461	217.790	569.200
90 WEEKS	2	91	379.422	57.299	252.030	518.760
91 WEEKS	6	281	375.357	53.633	244.170	567.140
92 WEEKS	5	250	371.845	62.274	227.960	535.350
93 WEEKS	5	233	378.135	53.657	237.340	583.800
94 WEEKS	2	86	390.130	60.497	249.990	546.000
95 WEEKS	6	270	380.702	54.398	253.880	583.900
96 WEEKS	5	240	378.228	64.210	200.650	541.330
97 WEEKS	5	223	383.208	54.271	261.690	593.210
98 WEEKS	2	83	393.158	61.035	252.720	544.400
99 WEEKS	6	259	381.229	57.161	246.650	578.000
100 WEEKS	5	229	383.591	65.112	235.100	554.600
101 WEEKS	5	212	389.068	55.852	214.670	597.000
102 WEEKS	2	80	400.509	62.005	261.740	570.230
103 WEEKS	6	248	388.119	57.977	265.650	603.200
104 WEEKS	5	219	390.259	66.439	235.700	572.990
105 WEEKS	5	205	390.847	58.615	229.010	613.200
106 WEEKS	2	77	401.673	60.265	260.360	566.760
107 WEEKS	6	239	388.060	58.133	251.310	616.100
108 WEEKS	5	207	389.360	68.059	207.550	609.730
109 WEEKS	5	196	394.409	60.172	260.640	641.790
110 WEEKS	5	194	391.515	61.375	214.130	600.700
111 WEEKS	3	126	380.453	63.307	188.450	515.600
112 WEEKS	1	33	415.376	81.804	230.510	630.430



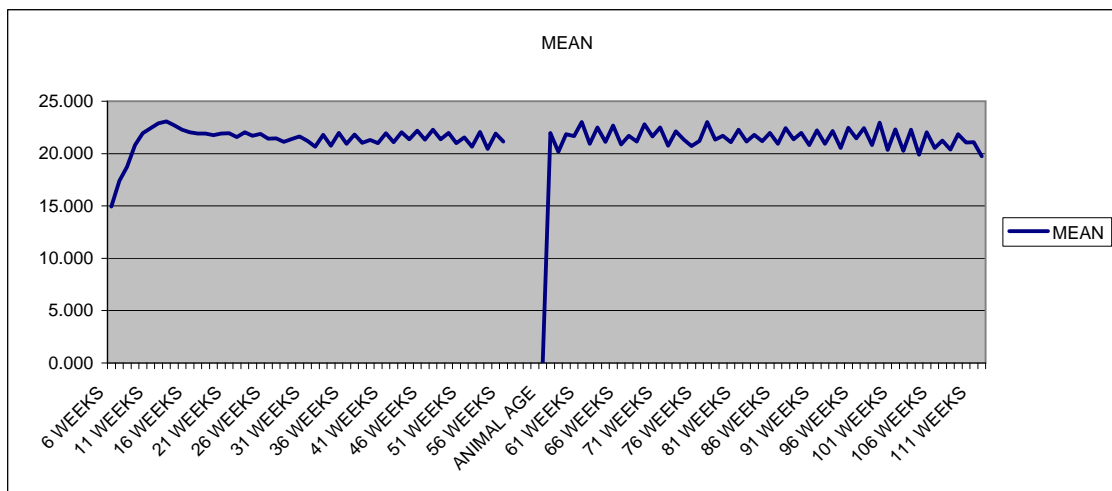
**Table 3: Food consumption of Males over the Study Weeks [g/Animal/Day]**

ANIMAL AGE	Number Studies	Number Animals	MEAN	STD	MIN	MAX	PERC_05
6 WEEKS	6	305	14.937	2.015	12.177	18.769	12.560
7 WEEKS	38	799	17.402	1.989	7.167	32.320	14.800
8 WEEKS	179	2333	18.750	2.057	13.415	35.286	16.043
9 WEEKS	190	2494	20.816	1.876	11.310	32.500	18.340
10 WEEKS	188	2495	21.944	2.193	10.793	43.600	19.077
11 WEEKS	188	2490	22.442	2.337	0.000	30.450	18.867
12 WEEKS	73	1466	22.884	2.107	13.500	33.893	19.751
13 WEEKS	141	1766	23.067	1.980	9.867	37.814	20.160
14 WEEKS	72	1369	22.702	2.015	12.385	31.465	20.080
15 WEEKS	64	1312	22.270	1.909	12.975	33.360	19.414
16 WEEKS	60	1294	22.034	1.956	13.230	30.765	19.273
17 WEEKS	60	1314	21.919	1.867	13.960	27.680	18.943
18 WEEKS	58	1288	21.904	1.867	14.935	29.820	19.120
19 WEEKS	55	1136	21.765	2.260	0.743	30.420	18.959
20 WEEKS	50	1119	21.898	1.821	14.040	30.170	19.210
21 WEEKS	31	706	21.959	2.427	18.355	43.100	19.406
22 WEEKS	36	572	21.567	1.698	17.773	28.030	19.220
23 WEEKS	36	562	22.025	1.640	15.242	30.670	19.413
24 WEEKS	28	462	21.711	1.815	17.523	27.714	19.403
25 WEEKS	16	463	21.879	1.460	17.002	26.100	20.010
26 WEEKS	12	313	21.427	1.797	17.100	27.338	18.677
27 WEEKS	13	338	21.445	1.414	15.050	25.000	19.549
28 WEEKS	12	303	21.114	1.592	16.357	25.852	18.753
29 WEEKS	12	438	21.402	1.955	13.774	26.523	19.051
30 WEEKS	8	282	21.626	2.854	18.246	33.789	19.020
31 WEEKS	9	308	21.208	1.652	16.487	26.802	19.014
32 WEEKS	10	317	20.666	2.922	6.081	26.778	18.151
33 WEEKS	9	378	21.778	1.856	13.056	26.524	18.960
34 WEEKS	7	237	20.754	1.342	18.049	23.151	18.674
35 WEEKS	9	270	21.966	1.420	17.660	26.190	20.446
36 WEEKS	7	242	20.938	1.315	17.556	24.790	18.937
37 WEEKS	9	380	21.823	1.443	19.201	26.598	19.926
38 WEEKS	5	222	21.039	1.198	19.020	23.846	19.423
39 WEEKS	6	245	21.291	1.499	18.929	25.690	19.420
40 WEEKS	5	222	21.005	1.078	18.700	23.017	19.271
41 WEEKS	8	370	21.940	1.270	19.411	24.662	20.337
42 WEEKS	5	222	21.074	1.477	15.971	24.166	19.417
43 WEEKS	6	245	22.030	1.313	19.574	25.571	20.054
44 WEEKS	5	222	21.360	1.087	19.506	23.614	19.726
45 WEEKS	8	370	22.183	1.512	19.486	25.851	19.963
46 WEEKS	5	222	21.345	1.347	19.231	24.109	19.363
47 WEEKS	6	245	22.286	2.406	19.546	35.203	19.817
48 WEEKS	5	222	21.351	1.345	17.969	23.571	19.000
49 WEEKS	8	369	21.966	1.922	19.034	27.077	19.731
50 WEEKS	5	220	21.009	1.111	19.234	23.880	19.394
51 WEEKS	6	244	21.545	1.550	17.406	25.357	19.214
52 WEEKS	5	219	20.673	1.322	18.363	26.614	18.993
53 WEEKS	8	367	22.052	1.717	15.895	26.310	19.862
54 WEEKS	5	219	20.457	0.998	18.049	22.457	18.637
55 WEEKS	6	242	21.916	1.589	18.395	26.850	20.083
56 WEEKS	6	237	21.142	1.191	18.154	23.700	19.651



**Table 3: continued**

ANIMAL AGE	Number Studies	Number Animals	MEAN	STD	MIN	MAX	PERC_05
57 WEEKS	7	345	21.944	1.842	16.449	25.886	19.299
58 WEEKS	6	236	20.177	2.144	11.297	25.587	17.700
59 WEEKS	5	203	21.855	1.519	18.833	26.956	19.844
60 WEEKS	6	275	21.661	2.084	18.974	38.852	20.043
61 WEEKS	5	228	23.020	1.833	19.283	27.371	20.500
62 WEEKS	5	198	20.928	1.368	18.017	22.849	18.366
63 WEEKS	4	163	22.493	1.796	16.531	26.724	20.689
64 WEEKS	4	193	21.131	0.980	18.814	23.433	19.294
65 WEEKS	5	265	22.680	1.830	19.576	26.497	20.305
66 WEEKS	4	193	20.874	1.150	17.489	23.533	19.620
67 WEEKS	3	157	21.707	1.900	16.994	25.766	19.182
68 WEEKS	4	193	21.136	1.266	16.289	24.100	19.897
69 WEEKS	5	263	22.787	1.600	19.471	26.352	20.100
70 WEEKS	4	190	21.642	2.012	17.560	29.648	19.404
71 WEEKS	3	155	22.506	1.453	20.062	25.743	20.629
72 WEEKS	4	188	20.766	1.220	17.743	24.329	19.351
73 WEEKS	5	261	22.129	1.806	19.049	26.549	19.381
74 WEEKS	4	187	21.343	1.273	18.446	24.537	19.909
75 WEEKS	3	155	20.711	1.832	18.094	24.923	18.257
76 WEEKS	4	186	21.216	1.108	19.183	24.319	19.436
77 WEEKS	5	259	23.012	1.746	19.206	27.162	20.795
78 WEEKS	4	186	21.333	1.124	18.974	24.326	19.840
79 WEEKS	3	153	21.708	1.644	16.919	25.062	19.321
80 WEEKS	4	184	21.094	1.419	16.468	24.310	19.662
81 WEEKS	5	257	22.293	2.042	17.435	26.683	18.890
82 WEEKS	4	182	21.146	1.325	17.163	23.552	19.566
83 WEEKS	3	152	21.793	1.896	15.471	25.000	19.031
84 WEEKS	4	181	21.185	1.811	15.929	24.895	18.514
85 WEEKS	5	254	21.963	2.131	16.548	26.259	18.379
86 WEEKS	4	179	20.934	1.512	16.834	23.994	19.163
87 WEEKS	3	149	22.418	2.259	16.071	26.814	18.969
88 WEEKS	4	179	21.372	1.821	16.891	24.537	18.594
89 WEEKS	5	250	21.988	2.296	13.307	26.189	18.414
90 WEEKS	4	174	20.808	1.649	15.964	23.929	17.939
91 WEEKS	3	146	22.232	2.102	13.814	26.643	18.757
92 WEEKS	4	171	20.921	1.434	16.815	24.211	19.377
93 WEEKS	5	245	22.167	2.075	15.657	26.943	18.714
94 WEEKS	4	169	20.550	1.460	18.210	23.711	18.597
95 WEEKS	3	142	22.464	2.609	13.838	27.689	19.586
96 WEEKS	4	168	21.440	1.576	18.043	25.636	19.600
97 WEEKS	5	237	22.432	2.064	17.211	28.074	19.286
98 WEEKS	4	165	20.800	1.891	13.818	24.357	18.881
99 WEEKS	3	135	22.959	2.112	18.893	27.640	20.018
100 WEEKS	4	162	20.346	1.888	15.351	23.819	17.626
101 WEEKS	5	230	22.320	2.167	18.282	27.597	18.871
102 WEEKS	4	160	20.249	2.360	11.323	23.854	17.129
103 WEEKS	3	134	22.279	2.486	15.154	27.257	19.157
104 WEEKS	4	153	19.894	2.360	10.093	22.980	16.275
105 WEEKS	5	223	22.023	2.601	15.683	28.432	17.368
106 WEEKS	4	146	20.544	2.747	7.886	23.995	16.429
107 WEEKS	3	126	21.253	2.419	15.010	25.932	17.966
108 WEEKS	4	141	20.384	2.632	0.357	23.233	16.636
109 WEEKS	6	243	21.849	2.042	12.929	29.014	19.288
110 WEEKS	5	183	21.043	2.146	13.563	29.800	16.979
111 WEEKS	2	79	21.086	1.481	18.521	25.395	18.952
112 WEEKS	1	39	19.748	3.085	14.328	25.250	15.563

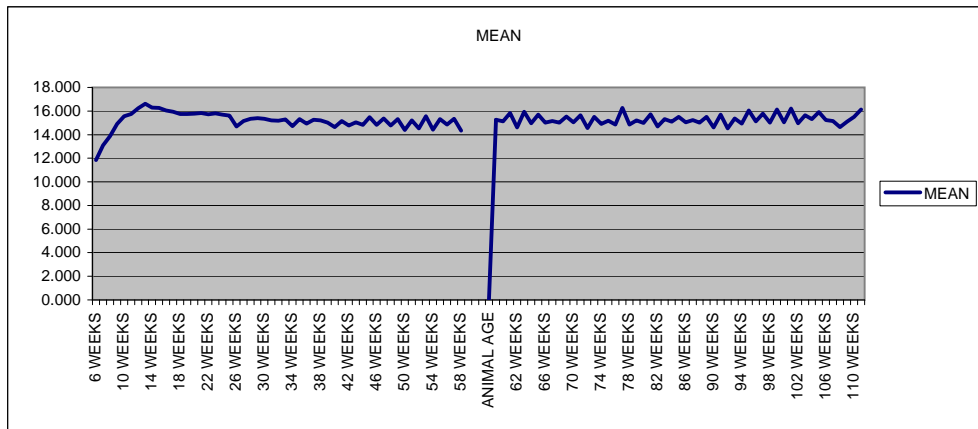


**Table 4: Food Consumption of Females over the Study Weeks [g/Animals/Days]**

ANIMAL AGE	Number Studies	Number Animals	MEAN	STD	MIN	MAX	PERC_05	PERC_95
6 WEEKS	6	305	11.856	0.995	9.971	14.273	10.646	13.703
7 WEEKS	37	789	13.102	1.839	4.570	36.190	11.407	15.637
8 WEEKS	176	2291	13.883	1.475	9.086	27.300	11.954	16.370
9 WEEKS	179	2339	14.910	1.924	8.871	64.420	12.923	17.800
10 WEEKS	173	2274	15.564	2.699	9.480	80.760	13.340	17.674
11 WEEKS	178	2344	15.752	1.720	0.200	22.157	13.143	18.221
12 WEEKS	74	1463	16.251	1.391	10.218	24.200	14.405	18.551
13 WEEKS	146	1838	16.614	1.455	11.629	25.143	14.393	18.861
14 WEEKS	76	1478	16.281	1.514	8.775	25.050	14.134	18.670
15 WEEKS	67	1406	16.254	1.439	10.085	25.043	14.148	18.785
16 WEEKS	62	1320	16.047	1.623	10.325	25.099	13.830	18.740
17 WEEKS	62	1318	15.941	1.733	9.285	29.241	13.768	18.826
18 WEEKS	61	1318	15.739	1.569	8.010	24.609	13.586	18.309
19 WEEKS	58	1158	15.761	1.579	9.909	25.786	13.475	18.214
20 WEEKS	51	1121	15.785	1.624	2.864	24.494	13.506	18.373
21 WEEKS	32	721	15.839	1.434	12.857	23.812	14.031	18.532
22 WEEKS	37	583	15.713	1.600	11.573	22.472	13.303	18.190
23 WEEKS	37	598	15.797	1.570	2.307	23.315	13.700	18.124
24 WEEKS	30	530	15.698	1.624	4.967	24.887	13.597	18.733
25 WEEKS	15	493	15.612	1.292	12.932	22.220	13.798	17.868
26 WEEKS	10	300	14.691	1.499	4.768	21.337	13.031	17.223
27 WEEKS	13	337	15.140	1.348	12.234	21.200	13.067	17.339
28 WEEKS	12	314	15.353	1.766	12.483	22.882	13.177	18.355
29 WEEKS	14	457	15.400	1.597	11.877	23.985	13.294	18.147
30 WEEKS	11	304	15.354	1.971	12.551	24.992	12.909	18.697
31 WEEKS	10	312	15.207	1.484	12.591	23.350	13.537	17.985
32 WEEKS	10	318	15.194	1.762	12.191	23.708	12.557	18.328
33 WEEKS	9	377	15.285	1.695	11.980	22.560	12.963	18.236
34 WEEKS	7	239	14.710	1.455	12.054	19.215	12.863	17.709
35 WEEKS	9	273	15.321	1.463	12.346	21.717	13.617	17.711
36 WEEKS	8	248	14.924	1.476	12.063	20.586	13.018	17.646
37 WEEKS	11	398	15.273	1.323	12.760	21.460	13.566	17.535
38 WEEKS	7	238	15.213	1.515	12.860	18.923	13.317	18.267
39 WEEKS	6	248	15.005	1.114	13.071	18.005	13.417	17.256
40 WEEKS	5	223	14.646	1.329	12.129	17.766	12.757	16.643
41 WEEKS	8	373	15.158	1.102	12.511	18.099	13.646	17.076
42 WEEKS	5	223	14.765	1.160	12.864	17.794	13.249	16.871
43 WEEKS	6	248	15.054	1.059	12.737	18.029	13.414	17.053
44 WEEKS	5	223	14.817	1.212	12.943	17.503	13.260	17.051
45 WEEKS	8	373	15.492	1.183	12.737	18.495	13.749	17.401
46 WEEKS	5	223	14.818	1.307	12.886	18.123	13.183	16.960
47 WEEKS	6	248	15.362	1.033	12.797	17.652	13.817	17.029
48 WEEKS	5	223	14.772	1.438	12.434	18.220	12.943	17.594
49 WEEKS	8	372	15.326	1.284	13.120	18.600	13.552	17.603
50 WEEKS	5	223	14.394	1.222	11.951	17.426	12.806	16.803
51 WEEKS	6	248	15.208	1.214	12.274	17.797	13.509	17.509
52 WEEKS	5	223	14.532	1.211	12.397	17.600	13.120	16.700
53 WEEKS	8	372	15.556	1.540	12.986	22.767	13.498	18.121
54 WEEKS	5	223	14.429	1.318	12.300	17.103	12.546	16.833
55 WEEKS	6	248	15.317	1.378	12.860	20.249	13.471	18.234
56 WEEKS	6	243	14.866	1.386	12.089	18.009	13.171	17.314
57 WEEKS	7	352	15.353	1.496	12.186	18.811	13.157	17.689
58 WEEKS	6	243	14.337	1.441	11.560	18.126	12.330	16.674

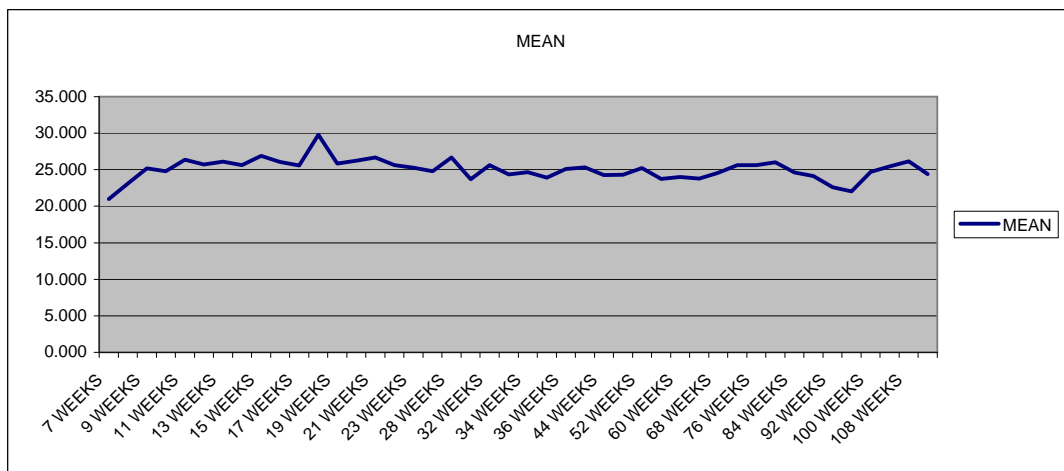
**Table 4: continued**

ANIMAL AGE	Number Studies	Number Animals	MEAN	STD	MIN	MAX	PERC_05	PERC_95
59 WEEKS	5	207	15.273	1.177	12.989	18.267	13.267	17.389
60 WEEKS	6	283	15.122	1.168	11.703	18.460	13.643	17.263
61 WEEKS	5	231	15.835	1.248	13.006	18.036	13.863	17.824
62 WEEKS	5	203	14.615	1.354	12.049	17.593	12.700	16.846
63 WEEKS	4	167	15.946	2.035	12.357	24.660	13.400	18.646
64 WEEKS	5	202	14.976	1.233	12.680	17.654	13.300	17.123
65 WEEKS	6	272	15.706	1.273	12.054	18.592	13.851	18.010
66 WEEKS	4	197	15.010	1.061	12.494	17.229	13.517	16.689
67 WEEKS	3	161	15.147	1.453	10.529	18.214	13.010	17.133
68 WEEKS	4	197	15.008	1.989	4.649	17.623	13.514	16.837
69 WEEKS	5	270	15.527	1.532	10.914	18.608	13.514	17.638
70 WEEKS	4	196	15.034	1.227	12.046	17.871	13.563	17.417
71 WEEKS	3	160	15.649	1.264	13.737	18.510	13.968	17.681
72 WEEKS	4	195	14.555	1.078	12.829	17.297	12.946	16.214
73 WEEKS	5	269	15.511	1.707	12.226	19.805	12.689	18.430
74 WEEKS	4	194	14.901	1.298	11.180	17.037	13.186	16.829
75 WEEKS	3	160	15.187	1.394	12.529	18.190	12.709	17.962
76 WEEKS	4	193	14.851	1.275	12.394	17.909	12.654	17.006
77 WEEKS	5	266	16.259	1.347	13.448	19.265	14.028	18.167
78 WEEKS	4	192	14.867	1.142	11.320	17.696	13.486	16.054
79 WEEKS	3	158	15.220	1.397	10.286	17.571	13.180	17.107
80 WEEKS	4	191	14.984	1.295	12.671	18.539	12.857	16.879
81 WEEKS	5	259	15.717	1.254	12.845	18.624	14.025	18.240
82 WEEKS	4	190	14.706	1.289	12.236	17.104	13.063	16.949
83 WEEKS	3	154	15.323	1.083	11.736	17.117	13.399	17.023
84 WEEKS	4	187	15.112	1.157	11.920	17.336	13.618	16.574
85 WEEKS	5	255	15.499	1.395	11.579	18.962	13.286	17.734
86 WEEKS	4	186	15.055	1.417	12.726	18.414	12.906	17.596
87 WEEKS	3	152	15.247	1.457	12.674	18.829	13.190	17.462
88 WEEKS	4	184	15.030	1.272	12.766	17.607	13.154	16.986
89 WEEKS	5	253	15.503	1.790	9.043	19.900	13.451	18.171
90 WEEKS	4	182	14.598	1.367	10.886	17.807	12.720	16.857
91 WEEKS	3	148	15.698	1.629	12.020	19.671	13.437	18.579
92 WEEKS	4	178	14.539	1.618	9.737	17.629	12.427	17.143
93 WEEKS	5	248	15.364	1.598	10.906	18.744	13.400	18.390
94 WEEKS	4	171	14.937	1.416	12.223	17.781	13.068	17.550
95 WEEKS	3	143	16.056	1.611	12.196	19.843	13.400	18.429
96 WEEKS	4	167	15.123	1.432	12.407	18.779	13.337	17.379
97 WEEKS	5	239	15.784	1.663	12.597	21.618	13.660	18.508
98 WEEKS	4	163	15.006	1.824	10.946	17.954	11.293	17.867
99 WEEKS	3	138	16.134	1.767	9.486	19.648	14.064	19.314
100 WEEKS	4	159	15.054	1.351	11.018	17.433	13.329	17.186
101 WEEKS	5	227	16.216	2.180	11.534	31.371	13.671	19.399
102 WEEKS	4	158	14.972	2.017	8.786	18.767	12.714	17.807
103 WEEKS	3	132	15.644	1.504	10.600	18.600	13.657	18.081
104 WEEKS	4	157	15.309	1.447	11.779	19.157	12.961	18.076
105 WEEKS	5	214	15.925	2.052	11.300	22.400	12.762	19.705
106 WEEKS	4	153	15.237	1.450	10.043	18.595	13.564	17.971
107 WEEKS	3	126	15.164	1.474	11.986	18.400	12.254	16.876
108 WEEKS	4	150	14.635	1.558	10.964	18.157	11.881	17.093
109 WEEKS	6	240	15.093	2.127	5.624	19.480	12.157	18.046
110 WEEKS	5	196	15.493	2.322	7.454	20.475	11.400	18.118
111 WEEKS	2	75	16.133	1.862	13.511	23.128	13.762	19.416



**Table 5: Water consumption of Males over the Study Weeks [g/Animal/Day]**

ANIMAL AGE	Number Studies	Number Animals	MEAN	STD	MIN	MAX	PERC_05	PERC_95
7 WEEKS	6	125	20.975	2.523	17.327	28.476	17.706	25.960
8 WEEKS	6	111	23.076	2.527	16.830	28.472	18.996	26.428
9 WEEKS	4	81	25.196	2.436	19.860	30.450	21.070	29.165
10 WEEKS	4	80	24.811	3.214	20.029	32.396	21.101	31.016
11 WEEKS	7	135	26.349	2.103	22.716	31.036	23.339	29.760
12 WEEKS	4	100	25.706	2.024	22.468	30.148	22.840	29.411
13 WEEKS	2	70	26.092	2.288	21.288	29.954	23.287	29.411
14 WEEKS	3	70	25.630	2.169	22.838	30.421	22.875	28.578
15 WEEKS	2	65	26.917	2.518	23.495	32.103	24.054	32.103
16 WEEKS	2	65	26.057	2.741	22.306	31.219	22.586	31.219
17 WEEKS	2	65	25.569	2.506	22.438	30.695	22.649	30.695
18 WEEKS	5	120	29.798	16.999	21.796	109.864	22.542	32.627
19 WEEKS	3	90	25.831	3.098	21.066	32.755	21.452	29.612
20 WEEKS	1	60	26.235	3.308	21.287	33.841	22.284	33.841
21 WEEKS	1	60	26.656	3.133	22.914	34.708	23.856	34.708
22 WEEKS	5	79	25.615	3.010	21.005	32.604	21.756	32.604
23 WEEKS	4	80	25.295	3.193	20.492	34.057	21.799	30.575
24 WEEKS	1	60	24.782	3.415	19.363	30.526	20.199	30.526
28 WEEKS	1	60	26.672	3.399	20.898	33.245	23.415	33.245
31 WEEKS	1	5	23.685	0.000	23.685	23.685		23.685
32 WEEKS	2	65	25.636	2.823	21.436	30.754	21.955	30.754
33 WEEKS	1	5	24.344	0.955	23.583	25.642	23.806	25.642
34 WEEKS	1	5	24.656	0.101	24.576	24.793	24.599	24.793
35 WEEKS	1	5	23.939	0.798	23.182	24.696	24.696	24.696
36 WEEKS	1	60	25.084	2.662	20.987	29.741	21.925	29.741
40 WEEKS	1	60	25.339	3.531	21.147	32.360	21.465	32.360
44 WEEKS	1	60	24.269	3.338	19.194	30.904	19.757	30.904
48 WEEKS	1	59	24.312	2.958	20.117	29.566	20.314	29.566
52 WEEKS	1	59	25.247	2.591	21.070	30.419	21.512	30.419
56 WEEKS	1	58	23.747	3.888	17.133	29.971	17.361	29.971
60 WEEKS	1	58	24.017	3.166	19.356	30.843	20.383	30.843
64 WEEKS	1	58	23.792	3.606	18.430	29.860	18.793	29.860
68 WEEKS	1	58	24.593	3.321	19.952	29.164	20.313	29.164
72 WEEKS	1	56	25.640	3.512	21.080	31.256	21.185	31.256
76 WEEKS	1	55	25.633	4.447	18.813	36.631	21.495	36.631
80 WEEKS	1	55	26.021	3.695	21.015	33.160	21.095	33.160
84 WEEKS	1	54	24.635	3.319	20.770	31.502	21.012	31.502
88 WEEKS	1	54	24.140	2.096	19.377	28.004	21.042	28.004
92 WEEKS	1	52	22.594	2.970	18.322	29.030	19.296	29.030
96 WEEKS	1	51	22.017	2.920	16.073	26.327	18.587	26.327
100 WEEKS	1	50	24.720	3.334	20.989	31.099	21.126	31.099
104 WEEKS	1	48	25.449	4.163	18.876	33.408	20.246	33.408
108 WEEKS	1	46	26.144	3.780	21.098	32.495	21.153	32.495
111 WEEKS	1	44	24.416	3.768	18.428	31.009	20.966	31.009



**Table 6: Water consumption of Females over the Study Weeks [g/Animal/Day]**

ANIMAL AGE	Number Studies	Number Animals	MEAN	STD	MIN	MAX	PERC_05	PERC_95
7 WEEKS	6	125	18.944	1.604	15.480	21.818	17.049	21.591
8 WEEKS	4	95	20.611	2.063	16.574	23.730	16.874	23.098
9 WEEKS	2	65	23.337	1.849	20.210	26.176	20.526	26.176
10 WEEKS	3	70	20.663	1.735	17.600	23.313	18.302	23.144
11 WEEKS	7	135	21.698	2.593	16.724	28.738	17.732	25.340
12 WEEKS	4	100	22.586	2.262	19.084	27.313	19.899	27.038
13 WEEKS	2	70	22.192	2.300	18.073	25.928	18.403	25.679
14 WEEKS	3	75	21.919	3.389	16.348	32.409	18.437	26.148
15 WEEKS	2	70	24.915	2.658	20.858	32.560	21.887	28.255
16 WEEKS	2	70	23.150	1.749	19.041	25.824	20.470	25.051
17 WEEKS	2	65	22.334	1.829	18.724	24.288	19.854	24.288
18 WEEKS	6	125	22.516	2.647	15.282	26.976	19.724	26.455
19 WEEKS	4	95	22.359	2.772	15.520	26.604	18.350	26.317
20 WEEKS	2	65	23.071	1.322	19.883	25.431	21.419	25.431
21 WEEKS	1	60	25.607	2.823	21.496	31.017	22.091	31.017
22 WEEKS	5	80	22.410	2.627	16.774	26.756	18.736	26.756
23 WEEKS	4	80	23.718	2.614	18.634	29.564	18.890	27.400
24 WEEKS	1	60	21.657	1.827	17.824	25.182	19.216	25.182
28 WEEKS	1	60	23.444	2.119	20.360	27.992	21.192	27.992
32 WEEKS	1	60	21.741	1.809	19.487	25.500	19.953	25.500
34 WEEKS	1	5	21.415	0.000	21.415	21.415		21.415
35 WEEKS	1	5	21.805	0.671	21.346	22.722	22.722	22.722
36 WEEKS	2	65	21.817	1.714	19.509	25.620	19.530	25.620
37 WEEKS	1	5	21.591	0.310	21.199	21.927	21.647	21.927
38 WEEKS	1	5	21.204	1.408	19.869	22.540	22.540	22.540
40 WEEKS	1	60	21.253	1.315	19.238	23.030	19.534	23.030
44 WEEKS	1	60	22.385	1.685	19.697	25.376	20.454	25.376
48 WEEKS	1	60	21.890	1.790	19.248	25.595	20.137	25.595
52 WEEKS	1	60	24.187	2.010	21.953	28.713	22.035	28.713
56 WEEKS	1	60	22.612	2.363	17.604	25.915	19.750	25.915
60 WEEKS	1	60	23.710	2.253	20.494	29.135	21.174	29.135
64 WEEKS	1	60	23.202	2.090	19.841	27.422	20.392	27.422
68 WEEKS	1	60	23.315	2.541	19.918	28.952	20.592	28.952
72 WEEKS	1	60	25.442	2.803	21.084	31.747	21.275	31.747
76 WEEKS	1	58	25.220	3.158	21.339	31.882	22.945	31.882
80 WEEKS	1	57	26.368	3.039	20.967	30.794	23.472	30.794
84 WEEKS	1	55	26.658	2.703	21.261	30.950	24.335	29.707
88 WEEKS	1	55	26.821	2.044	23.561	32.228	24.952	29.576
92 WEEKS	1	55	24.416	2.500	18.804	28.052	22.523	28.052
96 WEEKS	1	53	25.087	3.020	21.589	33.123	21.905	33.123
100 WEEKS	1	50	27.236	3.517	22.744	35.795	23.459	30.879
104 WEEKS	1	48	27.545	3.248	22.756	33.293	24.057	31.406
108 WEEKS	1	46	28.194	3.716	22.556	33.136	24.259	33.136
111 WEEKS	1	41	27.065	3.084	23.220	33.212	24.144	33.212



